



MAT 2013

All rights reserved. No part of this publication may be reproduced, distributed, or transmitted in any form or by any means, electronic, mechanical, photocopying, recording or otherwise, or stored in any retrieval system of any nature without the permission of cracku.in, application for which shall be made to support@cracku.in

Language Comprehension

Instructions

Each question has a group of sentences marked A, B, C, D and E. Arrange these to form a logical sentences.

Question 1

- A. Environment Education Unit of center for Science.
- B. Environment has always been working towards providing easy to understand reading material.
- C. Their new publication on this subject is an attempt to lend teachers a helping hand.
- D. It unfolds in two sections first, Climate Change, how to make sense of it all and second, Natural Resources, how to share and care.
- E. However, they are introduced to students not as a paragraph to memorise but as an activity to do.

A ACEBD

B DBCAE

C ABCDE

D BECAD

Answer: C

MAT Free Solved Previous Papers

Question 2

- A. A famous Japanese rock garden at Ryoan ji in North-West Kyoto, Japan.
- B. The rocks of various sizes are arranged on small white pebbles in five groups, each comprising, five, two, three, two and three rocks.
- C. The garden is 30m long from East to West and 10m from North to South.
- D. The garden contains 15 rocks arranged on the surface of white pebbles in such a manner that visitors can see only 14 of them at once from whichever angle the garden is viewed.
- E. There are no trees, just around 15 irregularly shaped rocks of varying sizes, some around by rocks, arranged in a bad of white grancelsard that is ranked everyday.

A ACEBD

B CAEDB

C DEABC

D BADEC

Answer: B

Question 3

- A. When they gathered together, the Buddha was completely silent and some speculated that perhaps the Buddha was tired or ill.
- B. It is said that Gautam Buddha gathered his disciples one day for a Dharma talk.
- C. One of Buddha's disciples, Mahakasyapa, silently gazed at the flower and broke into a broad smile.
- D. The orgins of Zen Buddhism are ascribed to the flower Sermon, the earliest source for which comes from the 14th century.
- E. The Buddha silently held up and twirled a flower and twinkled his eyes, several of his disciples tried to interpret what this meant though none of them were correct.

A EBDAC

B DBAEC

C BCDEA

D CADBE

Answer: C

Instructions

Choose the best option for the blank.

Question 4

Ironcally of the normally speaker bacame very shy and when confronted with the afraid stairs of her eager audience.

- A Quit, passenger
- B Gerrulous, reticent
- C Disappeancer, passant
- D Humble super, ciliour

Answer: D

Download Excellent App for MAT Preparation

Question 5

Although the whole team acted in unison, each number for a/an the of the production process.

- A Reliable, source
- B Responsible, element
- C Appointed, article
- D Gravel, felory

Answer: C

Question 6

The studies of the children were and was the result of it

- A Neglected, ignorance
- B Interrupted, incongruence
- C Officiated, alienation
- D Instructed, genius

Answer: A

Question 7

The correction is a good to add the blenechip sum phasma certificates stock to your porfolio

- A Organs, opportunity
- B Undergoing, change
- C Lancing, attempt
- D Ironside, time

Answer: A

Free Gk Tests

Instructions

Rearrange the jumbled alphabets in the following four options and find odd word among them.

Question 8

- A AZRBE
- B OESRH
- C LAMEC
- D NBOWR

Answer: D

Question 9

- A RYESGE
- B TRESTAO
- C ERTHCAE
- D NEOV

Answer: C

Question 10

- A YITHSR
- B GOIYLBO
- C ITRCECK
- D PGYHOEGRA

Answer: C

Daily Free Topic Test

Instructions

Each of these questions has a text portion followed by four alternative summaries. Choose the option that best captures the essence of the text.

Question 11

This decade has heralded the arrival of China and the rise of India on the world stage. Due to global recession the balance of power is shifting from the West to East China has already occupied second place in the world's biggest economies. BUt India is still struggling with formidable challenges like crushing poverty of millions, uneven growth, Can we in all honesty aspire to be a genuine, superpower?

- A Economic meltdown in the West has tilted the balance of economic power towards Asia
- B China 's Gross Domestic Product is next only to that of the United States of America
- C Even though India is a fast growing economy, it has to cross many hurdles before becoming a superpower

D Corruption and poverty in India are the main hindrances to its economic growth

Answer: C

Question 12

Get your grammar right! Live in the active voice rather in the passive, thinking more about what you do than about what happens to you. Live in the present tense, facing the duty at hand without regret for the past or worrying about the future. Live in the first person, criticizing yourself rather than finding faults with others.

A Self-introspection is always better than being critical of others

B The past is gone, future is uncertain, so live for the present

C Do your duty earnestly without worrying about the outcome

D Be optimistic, confident, hard-working and self-introspective

Answer: B

Question 13

Alexander technique is a therapy in complementary medicine for improving health by teaching people to move, sit and stand efficiently. It is designed to release unnecessary muscle tensions in order to eliminate or reduce the severity of a wide range of disorders like back pain, asthma, repetitive strain, injury and stuttering. Training is carried out in one to one sessions under a qualified teacher. The technique was started by F. Matthias Alexander in 1890 for his breathing problem and hoarseness.

A Alexander technique is a 120 years old therapy designed by F Matthias Alexander for his self treatment

B Alexander technique therapy is practised in one to one sessions under the guidance of an expert

C In Alexander technique, a qualified teacher works on the postures of a person, releasing muscular tension, to cure a number of disorders

D Alexander technique is helpful in treating Pains, lung problems, spinal problems and speech disorders

Answer: D

MAT Free Solved Previous Papers

Question 14

As things stand now, each country's financial system is being sustained and supported by its own government. Governments are primarily concerned with their own economies. This gives rise to financial protectionism, which threatens to disrupt and perhaps destroy global financial markets. So, regulations must become international in scope. Otherwise, global financial markets will be destroyed by regulatory arbitrage.

A Global markets need global regulations but each nation is rooted in the principle of national sovereignty

B Financial protectionism damages the concept of globalisation

C Global markets need international guidelines for the smooth running of global trade

D Every country tries to protect its own financial interests

Answer: C

Instructions

Identify the best way of writing the sentence in the context of the correct usage of standard written English.

Question 15

- A To reach the destination, the man followed the route given in the map because he was confused
- B As he became confused, the man had to follow the route given in the map to reach the destination
- C The man was confused, so he followed the route given in the map to reach the destination
- D To reach the destination, as the man was confused, he followed the route given in the map

Answer: C

Question 16

- A New words could be used, if required, to express the full force of exclamation
- B If necessary, new words should be used to express the full force of exclamation
- C To express the full force of exclamation, if necessary, new words will be used
- D New words are used, if required, to express the full force of exclamation

Answer: B

Download Excellent App for MAT Preparation

Question 17

- A Neither he comes nor he writes a letter now
- B Neither does he come nor he writes a letter now
- C Neither he comes nor does he write a letter now
- D Neither does he come nor does he write a letter now

Answer: B

Instructions

In each of these questions, a jumbled word is given. Rearrange the jumbled word and select the word which is opposite in meaning to the rearranged word

Question 18

DORGSEIAN

- A Beautiful
- B Future
- C Chaotic
- D Bright

Answer: C

Question 19

THYEALH

- A Coward
- B Empty

C Closed

D Sick

Answer: D

Free Gk Tests

Question 20

ERNUESGO

A False

B Dark

C Miser

D Small

Answer: C

Instructions

Study the passages below and answer the questions.

Passage I

A US economy firmly on the path of revival and robust growth would be of great significance for the world economy and Indian exporters should be looking at a sustained rise in demand in the US. The US economy, as per recent-released figures has already added some 171000 jobs in the month prior. This is shows that the US has made real progress in rejuvenating the economy. Of course, we are quite happy to see the revival of job growth in the US, especially because the Indian industry has had a not so minor role in this development. Indian companies have helped add some 20000 new jobs to the US economy in 2012-13 itself. Future Indian investment directed towards the US is likely to add to this number. Most of these new jobs are actually being created by the Indian Information Technology (IT) sector, which is mistakenly derided as a 'job stealer' by the US. However, empirical evidence clearly suggests that 'outsourcing improves corporate bottom-lines in the US, which in turn allows corporates to expand, thereby leading to the generation of new jobs. The current rhetoric on outsourcing is overblown and counterproductive. There is after all no real use in creating impediments for a sector that has organically linked our two economies and is helping generate net employment in both lands. A growing India-US economic relationship is necessarily IT enabled.

Question 21

According to the passage, to revive the US economy, Indian industry

A did not have much contribution

B had, in fact, no role to play

C had a significant contribution

D could not do much about it

Answer: C

Question 22

As per the passage, recent propaganda against outsourcing of jobs in the US is

A quite genuine and should have been more loud

B fairly logical and justified

C not quite correct

D good for the growth of the US industry

Answer: C

Daily Free Topic Test

Question 23

Which of the following statement(s) is true as per the information contained in the passage?

- A. Indian industry is capable of helping the US economy in the near future.
- B. Indian IT sector has a major role in creating new jobs in the US.
- C. Revival of the US economy would help Indian exporters a lot.

- A Only A
- B B and C
- C A, B and C
- D A and C

Answer: C

Question 24

Indian IT sector has created jobs in

- A the US alone
- B Both India and the US
- C Only India
- D None of the above

Answer: B

Instructions

Study the passages below and answer the questions.

Passage II

The Supreme Court wants to find out whether additional taxes on diesel cars can curb air pollution. But evidence from Europe, where around half of the automobiles are diesel-based and the air is far cleaner than in our cities, demonstrates that diesel cars cannot by themselves be blamed for deterioration in air quality and evidence from the Central Pollution Control Board clearly shows that industries, road dust from construction and geography account for most of the particulate matter emission in cities. Power plants and diesel generators also increase, pollution and the bulk of the transport emissions are on account of heavy commercial vehicles that use much older technologies than new diesel cars. Undoubtedly, adulteration of diesel with subsidised is to the problem. So, a tax on new diesel cars is too blunt an instrument which certainly will not yield clean aidt fact skew the market towards used rather than new cars which would not only hurt the automobile industry but also further air pollution. Cleaning the air in our cities would require concerted efforts by authorities including of diesel prices, ending sale of subsidised kerosene and supply of better quality fuel. It would also require a significant improvement in public transport systems and better enforcement of pollution control norms. The solution therefore is not so much in constraining the industry with new taxes, but in pushing through positive measures that enable their livelihoods while also breathing clean air.

Question 25

As per the passage, which of the following meaature(s) is considered necessary to reduce pollution in our cities?

- A Introducing better public transport systems
- B Stopping availability of cheap kerosene in the market

- C Introducing good quality fuel in the market
- D All of the above

Answer: C

MAT Free Solved Previous Papers

Question 26

What is the meaning of the word 'skew used in the passage?

- A Change
- B Distort
- C Divert
- D Introduce

Answer: C

Question 27

According to the passage, diesel cars are

- A solely responsible for air pollution in our cities
- B not at all blameworthy for air pollution
- C not much responsible for polluting air
- D None of the above

Answer: C

Question 28

As per information given in the passage. which of the following statements is not true?

- A. Government needs to relax pollution control norms.
- B. Commercial vehicles increase pollution substantially.
- C. In Europe most automobiles are not diesel-based.

- A A and C
- B Only B
- C Only C
- D A and B

Answer: A

Download Excellent App for MAT Preparation

Instructions

Study the passages below and answer the questions.

Passage III

The Election Commission (EC) has proposed an amendment to the 1950. Representation of the people Act (RPA) to ban all opinion polls once the election process is under way. which could be months before actual elections are held. Following the passing of tlhe 2009 RPA

(Second Amendment) Bill, a ban on exit polls conducted while the polling process is going on is already in place. While there may be a case for banning opinion polls or their republication while polling is actually underway and poll campaigning has ceased why all opinion polls should be banned is unclear. Nevertheless major political parties argued for this at last year's consultations on electoral reform, and the EC appears to have succumbed. Proponents of the ban argue, contradictorily, that, opinion polls tend to influence voters and voting patterns besides creating confusion galore. also drawn attention to complaints about political parties funding some opinion polls. But such a draconian ban on all opinion polls is tantamount to muzzling freedom of expression as well as the right of the media and research organisations to undertake such pre-poll exercises. These, after all, are an important metric to assess the people's mood and their aspirations, and their perception of political parties. Multiple opinion polls competing with each other restrict the possibility of manipulation by anyone pre-poll survey. Finally, the perception that voters are gullible enough to be duped by opinion polls, is an affront to their intelligence and political sense.

Question 29

According to the passage, presently, conducting exit polls

- A during the election process is not permitted
- B during polling process is banned
- C at the time of polling will be banned
- D None of the above

Answer: B

Question 30

As per the passage, which of the following statement(s) is true?

- A. It is incorrect to presume that Indian voters can be influenced by opinion polls.
- B. Major political parties of India had agreed to ban opinion polls.
- C. We should not doubt the intelligence of Indian voters.

- A Only A
- B A and B
- C A and C
- D B and C

Answer: A

Question 31

According to the passage, some political parties

- A keep themselves away from opinion polls
- B try to bribe the opinion polls for favours
- C do not want to get involved with opinion polls
- D None of the above

Answer: D

Free Gk Tests

Question 32

As per the passage, when there are a number of opinion polls conducted at the same time, it is

- A quite easy to manipulate anyone pre-poll survey
- B not easy to manipulate any one pre-poll survey
- C quite possible to manipulate anyone pre-poll survey
- D None of the above

Answer: C

Instructions

Study the passages below and answer the questions.

Passage IV

In the decade to come, the United States, Europe, and Japan are likely to grow slowly. Their sluggishness, however, will look less worrisome compared with the even bigger story in the global economy, which will be the three to four percent slowdown in China, which is already under way, with a possibly deeper slowdown in store as the economy continues to mature. China's population is simply too big and aging too quickly for its economy to continue growing as rapidly as it has. With over 50 percent of its people now living in cities, China is nearing what economists call "the Lewis turning point": the point at which a country's surplus labor from rural areas has been largely exhausted. This is the result of both heavy migration to cities over the past two decades and the shrinking work force that the one-child policy has produced. As growth slows in China and in the advanced industrial world, these countries will buy less from their export-driven counterparts, such as Brazil, Malaysia, Mexico, Russia, and Taiwan. During the boom of the last decade, the average trade balance in emerging market countries that have managed to sustain a five percent growth rate for a full decade, since 1930, 52 percent were democracies and 48 percent were authoritarian. At least over the short to medium term, what matters is not the type of political system a country has, but rather the presence of leaders who understand and can implement the reforms required for growth.

Question 33

According to passage, which of the following statements is not true?

- A. During the past 10 yr or so, only democratic countries have shown a sustained growth.
- B. During the 10 yr or so, Japan is likely to show a slow rate of growth.
- C. Leaders of a country can bring about changes which promote growth.

- A only B
- B only A
- C A and C
- D B and C

Answer: C

Question 34

As per the passage, in our immediate future, which of the following factors will cause more anxiety?

- A China's unprecedented growth
- B European countries 'slow growth
- C China's slow growth
- D None of the above

Answer: C

Daily Free Topic Test

Question 35

Which of the following is a reason for China's slow growth rate?

- A Considerable migration of labour from rural to urban, areas has resulted in reduction of workforce availability
- B Family planning measures adopted by Chinese families
- C China's population is aging rather quickly
- D All of the above

Answer: D

Question 36

In the years to come, it appears that China's economy will

- A grow at a rapid pace
- B grow at a very high rate
- C show a marked slowdown
- D None of the above

Answer: C

Instructions

Study the passages below and answer the questions.

Passage V

The larger global geo-economic backdrop to the next decade (2013-23) is the likely emergence of as the world's largest single-state economy overtaking the USA towards the end of this period. The 'critical question will be whether China under a new leadership will subscribe to the existing global status quo or adopt a revisionist approach – and seek to alter the contours of i global governance and related protocols to its own template. Within Asia, the texture and orientation of the triangular and bilateral relationship that will emerge between China, Japan and India over the next decade against the backdrop of the US in relative economic decline will exude many contradictory compulsions – the leitmotif of the 'contra-polar' world order. While China may be the world's most prosperous state in GDP terms, it will still rank low in per capita income and the US is likely to retain its military supremacy for atleast two decades. . It is instructive that India is also likely to join the ranks of the world 's three largest single-state economies by 2030 with an estimated GDP of the US - \$ 6.68 trillion – though it will be a distant subaltern when 'compared to China - \$25.6 trn and USA - \$ 22.8 trn. Will China's intent to remain Asia's unchallenged hegemony impact Indian interests? The Chinese track-record over the last two decades (since the end of the Cold War in 1991) has been chequered and many of its initiatives have been either directly adversarial or inimical to Indian interests. The most disturbing development has been the covert nuclear weapon and missile support that China has provided to Pakistan. The Mumbai carnage of November 2008 is a case in point. But much greater pro-active perspicacity is called for than what Delhi has exuded to date.

Question 37

As per information given in the passage, China has

- A been openly providing nuclear arms support, to Pakistan
- B not been giving any support to Pakistan in supply of nuclear weapons
- C been quickly supporting Pakistan in supplying nuclear weapons
- D None of these is applicable

Answer: C

MAT Free Solved Previous Papers

Question 38

According to the passage, which of the following statements is not true?

- A It is not quite clear how China will conduct the new world order when it becomes a global power economically
- B When China would emerge as the biggest economy, there would not be much change in relationships between Asian countries
- C The new leadership in China may change its relations with other nations of the world
- D All of the above

Answer: D

Question 39

The word 'leitmotif' used in the passage means

- A message
- B theme
- C method
- D significance

Answer: B

Question 40

As per information given in the passage, after a few years when China emerges as a world economic power, India

- A need not change its stance and continue with the existing policy towards China
- B should keep China's policy towards India in view and adopt a clear cut stance towards China
- C would have to face the consequences of China's stance towards India
- D need not worry much about China's policies towards India

Answer: B

Download Excellent App for MAT Preparation

Mathematical Skills

Instructions

For the following questions answer them individually

Question 41

If 15 men, 24 women and 36 boys can do a piece of work in 12 days, working 8h per day, how many men must be associated with 12 women and 6 boys to do another piece of work $2\frac{1}{4}$ times as large in 30 days working 6 h per day?

- A 6
- B 4
- C 8
- D 10

Answer: C

Explanation:

If M1 men can do W1 work in D1 days working H1 hours per day and M2 men can do W2 work in D2 days working H2 hours per day

(where all men work at the same rate), then

$$M_1 D_1 H_1 / W_1 = M_2 D_2 H_2 / W_2 \dots\dots\dots(1)$$

$$\text{So, given } 15M=24W=36B\dots\dots\dots(2)$$

where M,W,B are work done by one man, one woman and one boy respectively in one day.

$$\text{Also given } W_2=9/4W_1 \dots\dots(3)$$

for W_2 let x Men(M) are required.

$$\text{So total Human-power(for } W_2) = xM + 12W + 6B$$

$$\text{now using relations from (2) Human-power(for } W_2) = xM + 15/2M + 15/6M = (10+x)M$$

So replacing all the values in eqn (1) and (3), we get

$$\Rightarrow 15M \cdot 12 \text{ days} \cdot 8 \text{ Hrs} / W_1 = (10+x)M \cdot 30 \text{ days} \cdot 6 \text{ Hrs} / W_2$$

$$\Rightarrow 15M \cdot 12 \text{ days} \cdot 8 \text{ Hrs} / W_1 = (10+x)M \cdot 30 \text{ days} \cdot 6 \text{ Hrs} / (9/4W_1)$$

$$\Rightarrow x = 8 \text{ Men}$$

Free Gk Tests

Question 42

The horizontal distance between two towers is 60m. The angular elevation of the top of the taller tower as seen from the top of the shorter one is 30° . If the height of the taller tower is 150m, the height of the shorter one is

- A 100m
- B 106m
- C 116m
- D None of these

Answer: C

Explanation:

In triangle,

$$\tan 30 = 150-h/60$$

$$1/\sqrt{3} = 150-h/60$$

$$20\sqrt{3} = 150 - h$$

$$h = 150 - 20\sqrt{3}$$

$$h = 150 - 34.64$$

$$h = 115.36\text{m (nearly equal to 116m)}$$

Question 43

A boat travels upstream from B to A and downstream from A to B in 3 h. If the speed of the boat in still water is 9 km/h and the speed of the current is 3 km/h, what is the distance between A and B?

- A 6 km
- B 4 km
- C 8 km
- D 12 km

Answer: D

Explanation:

Speed of the boat upstream = $9 - 3 = 6$ km/hr

Speed of the boat downstream = $9 + 3 = 12$ km/hr

Let the distance between A and B be x kms.

So, time taken to travel x km upstream by boat = $x/6$ hrs.

And time taken to travel x kms downstream = $x/12$ hrs.

According to the question ,

$$x/6 + x/12 = 3$$

$$x[1/6 + 1/12] = 3$$

$$x = 4 \times 3 = 12$$

So, distance between A and B is 12 kms.

Question 44

The electricity bill of a certain establishment is partly fixed and partly varies with the number of units of electricity consumed. When in a certain month 540 units are consumed, the bill is 1800. In another month 620 units are consumed and the bill is 2040. In yet another month 500 units are consumed. The bill for that month would be

A ₹ 1680

B ₹ 1560

C ₹ 1840

D ₹ 1950

Answer: A

Explanation:

let fixed unit be x and cost of each unit be y

$$540y + x = 1800 \dots\dots\dots(1)$$

$$620y + x = 2040 \dots\dots\dots(2)$$

Solving both the equation we will have $y=3$

Now placing y value in any of the equation give

$$x = 180 \text{ (fixed value)}$$

So now we will have

$$\text{Bill} = 180 + (500 \times 3)$$

$$= 1680$$

Daily Free Topic Test

Question 45

A booster pump can be used for filling as-well-as for emptying a tank. The capacity of the tank is 2400 m³. The emptying capacity of the tank is 10 m³ per min higher than its filling capacity and the pump needs 8 min lesser to empty the tank than it needs to fill it. What is the filling capacity of the pump?

- A $60m^3/min$
- B $50m^3/min$
- C $72m^3/min$
- D None of these

Answer: B

Explanation:

Let, the filling capacity of the pump be $x m^3/min$

Then, emptying capacity of the pump = $(x+10) m^3/min$.

$$\text{So, } 2400/x - 2400/(x+10) = 8$$

On solving, we get

$$x = 50m^3/min$$

Question 46

A and B walk around a circular track. They start at 8 am from the same point in the opposite directions. A and B walk at a speed of 2 rounds per hour and 3 rounds per hour respectively. How many times shall they cross each other before 9:30 am?

- A 6
- B 5
- C 7
- D 8

Answer: C

Explanation:

A does 1 round per 30 minutes

B does 1 round per 20 minutes

How many minutes would it take making a round together:

$$x/30 + x/20 = 1$$

$$2x + 3x = 60$$

$$5x = 60$$

$$x = 12$$

They meet every 12 minutes.

How many 12 minute periods are there from 8:00 am to 9:30 am

90 minutes, so

$$90/12$$

Answer is 7 times they cross each other.

Question 47

The dimensions of a room are $10m \times 7m \times 5m$. There are 2 doors and 3 windows in the room. The dimensions of the doors are $1m \times 3m$. One window is of size $2m \times 1.5m$ and the other two windows are of size $1m \times 1.5m$. The cost of painting the walls at ₹ 3 per m^2 is

- A ₹ 578.50

B ₹ 474

C ₹ 684

D ₹ 894

Answer: B

Explanation:

Area of 4 walls = $2(l+b)h = 2(10+7) \times 5$

= 170 sq m

Area of 2 doors and 3 windows = $2(1 \times 3) + (2 \times 1.5) + 2(1 \times 1.5)$

= 12 sq m

Area to be painted = $170 - 12 = 158$ sq m

Cost of painting = Rs. $158 \times 3 =$ Rs. 474

MAT Free Solved Previous Papers

Question 48

There are two bags, one of which contains 3 black and 4 white balls, while the other contains 4 black and 3 white balls. A dice is cast. If the face 1 or 3 turns up, a ball is taken from the first bag and if any other face turns up a ball is chosen from the second bag. The probability of choosing a black ball is

A $\frac{11}{21}$

B $\frac{10}{21}$

C $\frac{12}{21}$

D $\frac{9}{21}$

Answer: A

Explanation:

Bag1 = 3 black, 4 white balls

Bag2 = 4 black, 3 white balls

Probability of selecting bag 1 = $\frac{2}{6} = \frac{1}{3}$

Probability of selecting bag 2 = $1 - \frac{1}{3} = \frac{2}{3}$

Probability of choosing a black ball from bag 1 = $\frac{3}{7}$

Probability of choosing a black ball from bag 2 = $\frac{4}{7}$

Required probability = $\frac{1}{3} \times \frac{3}{7} + \frac{2}{3} \times \frac{4}{7}$

$\frac{11}{21}$

Question 49

A runs $1\frac{2}{3}$ times as fast as B. If A gives B a start of 380 m. How far must the winning post be so that A and B reach it at the same time?

A 300 m

B 200 m

C 270 m

D 160 m

Answer: B

Explanation:

Ratio of the speeds of A and B = $5/3 : 1 = 5 : 3$

Thus, in race of 5 m, A gains 2 m over B.

2 m are gained by A in a race of 5 m.

80 m will be gained by A in race of $(5/2 \times 80)$:

= 200 meters

So,

Winning post is 200 m away from the starting point.

Question 50

A cistern, open at the top, is to be lined with sheet lead which weights 27 kg/m^3 . The cistern is 4.5 m long and 3 m wide and holds 50 m^3 . The weight of lead required is

A 1764.60 kg

B 1864.62 kg

C 1660.62 kg

D 1860.62 kg

Answer: B

Explanation:

Let the depth of the cistern be h meters

Then $4.5 \times 3 \times h = 50$

So, $h = 50/13.5$

$h = 100/27$

Area of sheet required = $lb + 2(bh + lh)$

= $lb + 2h(l + b)$

= $[4.5 \times 3 + 2 \times 100/27(4.5 + 3)] \text{ sq m}$

= $(13.5 + 200/27 \times 7.5)$

= $(27/2 + 500/9)$

= $1243/18$

Therefore weight of lead = $(27 \times 1243/18)$

= $3729/2 \text{ kg}$

= 1864.5

Download Excellent App for MAT Preparation

Question 51

A cylindrical tub of radius 12 cm contains water up to a depth of 20 cm. A spherical iron ball is dropped into the tub and thus the level of water is raised by 6.75 cm. The radius of the ball is

A 6 cm

B 4.5 cm

C 7.25 cm

D 9 cm

Answer: D

Explanation:

Given radius of the cylinder, $r = 12$ cm

It is also given that a spherical iron ball is dropped into the cylinder and the water level raised by 6.75 cm

Hence volume of water displaced = volume of the iron ball

Height of the raised water level, $h = 6.75$ m

Volume of water displaced = $\pi r^2 h$

$$= \pi \times 12 \times 12 \times 6.75 \text{ cm}^3$$

So, Volume of iron ball = $\pi \times 12 \times 12 \times 6.75 \text{ cm}^3 \dots (1)$

But, volume of iron ball = $\frac{4}{3}\pi r^3 \dots (2)$

From (1) and (2) we get

$$\frac{4}{3}\pi r^3 = \pi \times 12 \times 12 \times 6.75$$

On solving, we get

$$r^3 = 729$$

$$r^3 = 3^6$$

Therefore, $r = 9$

Radius of the iron ball is 9 cm

Question 52

What per cent selling price would be 34% of the cost price if the gross profit is 26% of the selling price?

A 74.00%

B 25.16%

C 17.16%

D 88.40%

Answer: B

Explanation:

Let the selling price of the article = Rs. 100

Therefore,

Profit = Rs. 26

So, Cost price of the article = S.P. - Profit

$$= 100 - 26 = \text{Rs. } 74$$

So,

$$\text{Required \%} = \frac{34 \times 74}{100}$$

$$= 25.16\%$$

Question 53

The present worth of a bill due 7 months hence is ₹1200. If the bill were due at the end of $2\frac{1}{2}$ yr, Its present worth would be Z ₹1016. What is the rate per cent of the bill?

- A 8%
- B 10%
- C 16%
- D 18%

Answer: B

Explanation:

Since,

$$S.I. = \text{Principal} * \text{Rate} * \text{Time} / 100$$

$$\text{Therefore, } 1200 + 1200 * 7 * r / 12 * 100 = \text{Amount (A)}$$

$$1200 + 7r = A \dots\dots\dots(i)$$

$$\text{and } 1016 + 1016 * 5 * r / 2 * 100 = A$$

$$\text{Therefore, } 1016 + 25.4r = A \dots(ii)$$

$$1016 + 25.4r = 1200 + 7r$$

So,

$$25.4r - 7r = 1200 - 1016$$

$$18.4r = 184$$

$$r = 184 / 18.4$$

$$= 10\% \text{ per annum}$$

Free Gk Tests

Question 54

If the ages of P and R are added to twice the age of Q, the total becomes 59. If the ages of Q and R are added to thrice the age of P, the total becomes 68 and if the age of P is added to thrice the age of Q and thrice the age of R, the total becomes 108. What is the age of P?

- A 19 yr
- B 15 yr
- C 17 yr
- D 12 yr

Answer: D

Explanation:

According to question

$$P+R+2Q=59\dots\dots\dots1$$

$$Q+R+3P=68 \dots\dots\dots2$$

$$P+3Q+3R=108 \dots\dots\dots3$$

Multiply equation (2) by 3

And subtract equation (iii) from it,

Then P=12 years

Question 55

If 6 years are subtracted from the present age of Shyam and the remainder is divided by 18, then the present age of his grand son Anup is obtained. If Anup is 2 years younger to Mahesh whose age is 5 years, then what is the age of Shyam?

- A 48 yr
- B 60 yr
- C 84 yr
- D 96 yr

Answer: B

Explanation:

Present age of Mahesh = 5 years

Present age of Anup = 5 - 2 = 3 years

Let present age of Shyam = x

Then, present age of Anup = $x - 6/18$

$$x - 6/18 = 3$$

$$\text{So, } x - 6 = 3 \times 18 = 54$$

$$\text{Therefore, } x = 54 + 6$$

$$= 60$$

Question 56

There are two concentric circular track of radii 100m and 102m, respectively. A runs on the inner track and goes once round in 1 min 30 sec, while B runs on the outer track in 1 min 32 sec. Who runs faster?

- A A
- B B
- C Cannot be determined
- D None of these

Answer: B

Explanation:

First let us take out the circumferences of both circles.

Radius of inner circle = 100 m

$$\begin{aligned} \therefore \text{Circumference of the inner track} &= 2\pi r \\ &= 2 \times 3.14 \times 100 \\ &= 628 \text{ m} \end{aligned}$$

Radius of outer track = 102 m

$$\text{So, Circumference of outer track} = 2\pi r = 2 \times 3.14 \times 102 = 753.6 \text{ m}$$

Time taken by A = 1 min 30 sec = 90 sec

Time taken by B = 1 min 32 sec = 92 sec

Speed of A = Distance covered by A / Time taken

$$= 628/90$$

$$= 6.98 \text{ m/s}$$

Speed of B = Distance covered by B / time taken

$$=753.6/92$$

$$=8.19 \text{ m/s}$$

Speed of A is smaller than the speed of B.

So, B runs faster.

Daily Free Topic Test

Question 57

A man reaches his office 10 minutes late if he drives his car at 40 kmph, and 5 minutes early if he drives his car at 50 kmph from his home. How should I calculate the distance of his office from his home?

- A 25
- B 50
- C 75
- D 100

Answer: B

Explanation:

Speed = distance / time

$$40 = \text{distance} / (t + 10)$$

$$50 = \text{distance} / (t - 5)$$

$$4/5 = (t-5)/(t+10)$$

$$4t + 40 = 5t - 25$$

$$t = 65 \text{ min}$$

distance = speed * time

$$= 40 * (75/60) \text{ --- in hours}$$

$$= 50 \text{ km}$$

Question 58

Out of 20 consecutive positive integers, two are chosen at random. The probability that their sum is odd is

- A $\frac{10}{19}$
- B $\frac{1}{20}$
- C $\frac{19}{20}$
- D $\frac{9}{19}$

Answer: A

Explanation:

You have to choose Odd-Even or Even-Odd.

The probabilities of both events are the same: at the start there's the same amount of odds and evens.

So calculate for one of them and multiply by 2.

$$\text{First number being odd: } 10/20 = 1/2$$

$$\text{Second number being even: } 10/19$$

Overall = $10/19 \times 2 \times 2 = 10/19$

Question 59

Two coal loading machines, each working 12 h per day for 8 days, handle 9000 tonne of coal with an efficiency of 90%, while 3 other coal loading machines at an efficiency of 80% are set to handle 12000 tonne of coal in 6 days. How many hours per day should each machine work?

- A 18 h per day
- B 16 h per day
- C 20 h per day
- D 14 h per day

Answer: B

Explanation:

According to the question,

time 1/amount of work done 1 = time 2/amount of work done 2

$$(12 \times 8 \times 9) : (9000/2) :: (6 \times x \times 8) : (12000/3)$$

So, on solving, we get

$$x = 16 \text{ h/day}$$

MAT Free Solved Previous Papers

Question 60

Six pipes are fitted to a water tank. Some of these are inlet pipes and the others outlet pipes. Each inlet pipe can fill the tank in 9 h and each outlet pipe can empty the tank in 6 h. On opening all the pipes, an empty tank is filled in 9 h. The number of inlet pipes is

- A 4
- B 3
- C 2
- D 5

Answer: A

Explanation:

Let there are x inlet pipes.

work done by inlet = $1/9$

work done by outlet = $1/6$

Here $6-x$ is the outlets

$$x/9 - (6-x)/6 = 1/9$$

$$5x = 20$$

$$x = 4$$

Then there will be 4 inlet pipes that will fill the tank

Question 61

A student purchased a computer system and a colour printer. If he sold the computer system at 10% loss and the colour printer at 20% gain, he would not lose anything. But if he sells the computer system at 5% gain and the colour printer at 15% loss, he would lose 2 800 in the bargain. How much did he pay for the colour printer?

- A ₹ 16000
- B ₹ 8000
- C ₹ 9000
- D ₹ 5334

Answer: A

Explanation:

Cost Price. of comp. system = Rs. A

Cost Price of color printer = Rs. B

$$0.9A + 1.2B = A + B$$

$$0.2B = 0.1A$$

$$A = 2B$$

$$(A + B) - (1.05A + 0.85B) = 800$$

$$(2B + B) - (2.10B + 0.85B) = 800$$

$$3B - 2.95B = 800$$

$$0.05B = 800$$

$$B = 800/5 \times 100$$

$$= 16,000$$

Question 62

Suppose that a maximum of 25 g of salt dissolves in 100 g of water. Any more salt, if added, remains undissolved and a sediment falls at the bottom. Now, water is evaporated from 1 kg of a 4% solution at the rate of 28 g per hour. After how long will it start sedimenting, approximately?

- A 29 h
- B 31 h
- C 35 h
- D 23 h

Answer: B

Explanation:

25 gm salt in 100 gm water

$$1 \text{ gm} = 100/25$$

$$40 \text{ gm} = 100/25 * 40 = 160 \text{ gm}$$

Water is evaporated at 28 gms per hour

From option C, we get

after 30 hrs

$$\text{water loss} = 30 * 28$$

$$= 840$$

$$\text{Present value of water} = 1000 - 840 = 160 \text{ gms}$$

After 30 hrs, water will start to reduce and salt will begin to sediment.

Download Excellent App for MAT Preparation

Question 63

In a defective 6 faced die with numbers 1 to 6 inscribed, probability of odd is 2 times that of even. What is the probability to get number 5 in single throw?

- A $\frac{2}{9}$
- B $\frac{4}{81}$
- C $\frac{1}{3}$
- D $\frac{1}{9}$

Answer: A

Explanation:

Prob of even + Prob of odd = 1 (total probability)

Prob of even + 2 (Prob of even) = 1

3(Prob of even) = 1

Prob of even = $\frac{1}{3}$

So, prob of odd = $\frac{2}{3}$

Since there are 3 odd numbers {1,3,5}.

So, Prob of getting 5 is $\frac{1}{3}$

Hence, getting 5 (odd) in a single throw is = $\frac{2}{3} * \frac{1}{3} = \frac{2}{9}$

Question 64

Out of the total production of iron from hematite, an ore of iron, 20% of the ore gets wasted. Out of the remaining iron, only 25% is pure iron. If the pure iron obtained in a year from a mine of hematite was 80000 kg, then the quantity of hematite mined in the year is

- A 400000 kg
- B 500000 kg
- C 450000 kg
- D 600000 kg

Answer: A

Explanation:

Let 100 kg of hematite be obtained then 20% of it get wasted that means 80 kg of ore remains.

Pure iron = 25% of remaining ore = $80 * \frac{25}{100}$

= 20 kg.

20 kg pure Iron is obtained from 100 of hematite.

1 kg pure Iron is obtained from = $\frac{100}{20}$ hematite;

Then, 80000 kg pure Iron is obtained from = $(\frac{100}{20}) * 80000$

= 400000 kg hematite.

Question 65

A car driver, driving in a fog, passes a pedestrian who was walking at the rate of 2 km/h in the same direction. The pedestrian could see the car for 6 min and it was visible to him up to a distance of 0.6 km. What was the speed of the car?

- A 15 km/h

- B 30 km/h
- C 20 km/h
- D 8 km/h

Answer: D

Explanation:

Relative speed formula in same direction

S1 and S2 be the speeds of car and passenger respectively and L be the distance travelled.

$$S1-S2=(L1+L2)/T$$

So in the question $s1=2\text{km/hr}$

$$L1+L2=0.6\text{km}$$

$T=6\text{min}$ so to covert in hour

$$6\text{min}=1/10\text{hr}$$

So put all the values in the formula

$$S1-2=(0.6)*10$$

$$S1=8\text{km/hr}$$

Free Gk Tests

Question 66

A, B and C working together completed a job in 10 days. However, C only worked for the first three days when 37/100 of the job was done. Also, the work done by A in 5 days is equal to the work done by B in 4 days. How many days would be required by the fastest worker to complete the entire work?

- A 25 days
- B 20 days
- C 30 days
- D 40 days

Answer: B

Explanation:

$$A+B+C \text{ 3 day work} = 37/100$$

$$\text{remaining work} = 63/100$$

$$A+B \text{ complete the work in 7 days} = 9*7/100$$

$$A+B \text{ 1 day work} = 9/100$$

$$\text{Now } A+B \text{ 1st 3 days work} = 27, \text{ remaining} = 37-27=10$$

$$\text{so in 1st 3 days A work} = 10, \text{ A 1 day work} = 10/3$$

So, C alone needs 30 days to complete the work

$$A \text{ 5 day work} = B \text{ 4 day work (Clearly B is more efficient than A)}$$

$$A \text{ efficiency} = 20 \text{ \#br\#\#B efficiency} = 25 \text{ \#br\#\#}$$

$$\text{Now } A+B \text{ 1 day work} = 9 \text{ \{i.e A is doing } 4/9 \text{ part and B is doing } 5/9\}}$$

$$\text{If A work alone} = 25 \text{ Days}$$

$$\text{If B work alone} = 20 \text{ Days}$$

Question 67

Three different containers contain different quantities of a mixture of milk and water, with measurements are 403 kg, 434 kg and 465 kg. What biggest measure must be there to measure all the different quantities exactly?

- A 70 kg
- B 51 kg
- C 31 kg
- D 41 kg

Answer: C

Explanation:

Different containers contain different quantities of a mixture of milk and water, with measurements are 403 kg, 434 kg and 465 kg

Required answer = HCF of measurements of 403, 434 and 465

$$403 = 31 \times 13$$

$$434 = 31 \times 7 \times 2$$

$$465 = 31 \times 5 \times 3$$

$$\text{HCF} = 31$$

So, biggest measure must be there to measure all the different quantities exactly = 31 kg.

Question 68

A conical tent is 5m high and the radius of the base of 12m find the slant height if the cost of 1m square canvas is rs 70 find the cost of canvas required to make the tent

- A 34322
- B 34320
- C 34321
- D 34319

Answer: C

Explanation:

Radius of the tent = 12m

Height = 5m

$$\text{Slant height} = \sqrt{r^2 + h^2}$$

$$= \sqrt{5^2 + 12^2}$$

$$= \sqrt{25 + 144}$$

$$= \sqrt{169}$$

$$= 13 \text{ m}$$

Curved surface area of the tent = $\pi r l$

$$= 22/7 \times 12 \times 13$$

$$= 490.28$$

$$= 490.3 \text{ m}^2$$

Cost of 1 m² canvas = ₹70

Cost of 490.3 m^2 canvas = 490.3×70
= ₹34321

Daily Free Topic Test

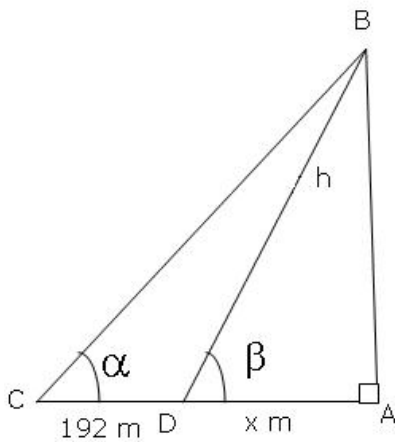
Question 69

At a point on level ground, the angle of elevation of a vertical tower is found to be such that its tangent is $\frac{5}{12}$. On walking 192 m towards the tower, the tangent of the angle of elevation is $\frac{3}{4}$. The height of the tower is

- A 96 m
- B 150 m
- C 180 m
- D 226 m

Answer: C

Explanation:



$$\tan \alpha = \frac{5}{12}$$

$$\tan \beta = \frac{3}{4}$$

In triangle BAC,

$$\tan \alpha = \frac{AB}{AC} = \frac{5}{12} = \frac{h}{(X+192)} \dots \dots \dots (1)$$

In Triangle DAB,

$$\tan \beta = \frac{AB}{AD} = \frac{3}{4} = \frac{h}{x}$$

$$x = \frac{4h}{3}$$

Using (ii) in (i)

$$\frac{5}{12} = \frac{h}{(192 + \frac{4h}{3})}$$

On solving, we get

$$h = 180 \text{ metres.}$$

Hence, the height of the tower is 180 metres.

Question 70

In a medical certificate, by mistake a candidate gave his height as 25% more than actual. In the interview panel, he clarified that his height was 55 ft 5 inches. What is the percentage correction made by the candidate from his stated height to his actual height?

- A 28.56%

- B 20%
- C 25%
- D None of these

Answer: B

Explanation:

Actual/clarified height = $X = 5.5$

Mistaken height = $1.25 X = 6.875$

Percentage correction = $(6.875-5.5)/6.875$

= 20%

Question 71

A manufacturer of a certain item can sell all he can produce at the selling price of ₹ 60 each. It cost him ₹ 40 in materials and labour to produce each item and he has overhead expenses of ₹ 3000 per week in order to operate that plant. The number of units he should produce and sell in order to make a profit of at least ₹ 1000 per week is

- A 300
- B 400
- C 250
- D 200

Answer: D

Explanation:

Let x be total items/week,

Selling Price (SP) will be $60x$,

Cost Price (CP) will be $[40x+4000$ (extra 1000 for profit)]

So,

$$40x + 4000 = 60x$$

$$20x = 4000$$

$$x=200.$$

The number of units he should produce and sell in order to make a profit of at least ₹ 1000 per week is 200

MAT Free Solved Previous Papers

Question 72

A jar full of whisky contains 40% alcohol. A part of this whisky is replaced by another containing 19% alcohol and now the percentage of alcohol was found to be 26%. What quantity of whisky is replaced ?

- A $\frac{2}{3}$
- B $\frac{1}{3}$
- C $\frac{3}{7}$
- D $\frac{4}{7}$

Answer: A

Explanation:

0% alcohol solution is mixed with 19% alcohol solution to give 26% alcohol solution.

$$\begin{aligned}w_1/w_2 &= (A_2 - A_{avg})/(A_{avg} - A_1) \\ &= (40 - 26)/(26 - 19) \\ &= 14/7 = 2/1\end{aligned}$$

So 2 parts of 19% solution were mixed with 1 part of 40% solution. This means that 2/3rd of the 40% solution was replaced by 19% solution.

Question 73

A fair coin is tossed repeatedly. If head appears on the first four tosses, then the probability of appearance of tail on the fifth toss is

- A $\frac{1}{2}$
- B $\frac{1}{7}$
- C $\frac{3}{7}$
- D $\frac{2}{3}$

Answer: A

Explanation:

Probability of head = $\frac{1}{2}$

Because coin has only two chances: tails or head.

And the statement that tails come 4 times will not affect the fifth toss.

So the probability of getting head = $\frac{1}{2}$

Question 74

The fuel indicator in a car shows $\frac{1}{5}$ th of the fuel tank as full. When 22 more litres of fuel are poured into the tank, the indicator rests at three-fourth of the full mark. What is the capacity of the fuel tank?

- A 40 L
- B 30 L
- C 25 L
- D 35 L

Answer: A

Explanation:

Let the capacity of the fuel tank be x liters.

According to the question:

$$x/5 + 22 = 3/4x$$

On solving, we get

$$x = 40$$

So,

Capacity of the fuel tank = 40 litres.

Download Excellent App for MAT Preparation

Question 75

A sum of money is accumulating at compound interest at a certain rate of interest. If simple interest instead of compound were reckoned, the interest for the first two years would be diminished by ₹ 20 and that for the first three years, by 61. What is the sum?

- A ₹ 7500
- B ₹ 7000
- C ₹ 8000
- D ₹ 6500

Answer: C

Explanation:

P - sum and r - rate of interest

Simple Interest = $\frac{Prt}{100}$

Compound interest:

Amount = $P(1 + \frac{r}{100})^n$

$P(\frac{r}{100})^2 = 40$

$P(\frac{r}{100})^2 \times \frac{(100+r)}{100} = 61$

On Solving, we get

P = 8000 (sum)

Question 76

A man covers a certain distance on a toy train. If the train moved 4 km/h faster, it would take 30 min less. If it moved 2 km/h slower, it would have taken 20 min more. What is the distance covered?

- A 65 km
- B 60 km
- C 70 km
- D 75 km

Answer: B

Explanation:

Let V be the speed and T be the time taken to cover the distance.

$(V + 4)(T - \frac{1}{2}) = (V - 2)(T + \frac{1}{3})$.

$(V + 4)(T - \frac{1}{2}) = VT$.

On solving, we get

V = 20 km/hr and T = 3 hours.

The distance = VT = 60 km.

Question 77

Two trains, 330 and 110 m long, are going in the same direction. The faster train takes one minute to pass the other completely. If they are moving in opposite directions, they pass each other completely in 3 s. What is the speed of the faster train?

- A 42 m/s
- B 38 m/s

C 46 m/s

D 50 m/s

Answer: A

Explanation:

Using the concept of relative velocity:

Total distance-240 m

When going in same direction

$$240/x-y=60$$

$$x-y=4$$

When going in different direction

$$240/x+y=3$$

$$x+y=80$$

On solving the equations we get,

$$x=42 \text{ and } y=38$$

Speed of faster train is 42m/s

and slower one is 38m/s.

Free Gk Tests

Question 78

The average age of all the students of a class is 18 yr. The average age of boys of the class is 20 yr and that of the girls is 15 yr. If the number of girls in the class is 20, then what is the number of boys in the class?

A 30

B 15

C 45

D 50

Answer: A

Explanation:

Let x = boys in class and y =girls in class = 20 (given).

Average = Sum of age/No. of students

$$\text{Given Avg. of class is } = \{(20x+15(20))/(20+x)\} = 18.$$

On solving, we get

$$x = 30$$

No.of boys in class is 30

Question 79

The total tractor population in a State is 294000, out of which 150000 are made by Mahindra & Mahindra. Out of every 1000 Mahindra tractors, 98 are red in colour. But only 5.3% of the total tractor population is red. Find the percentage of non-Mahindra tractors that are red.

A 3%

B 5.025%

C 5.130%

D 6.140%

Answer: A

Explanation:

Mahindra red tractor = $98/100 \times (150000) = 147000$

Total red tractor = $294000 \times .53 = 155820$

Non Mahindra red tractor = $155820 - 147000$

= 8820

i.e $8820/294000$

= .03

= 3%

Question 80

If 7% of the total quantity of wheat is lost in grinding when a country has to import 12 million tonne but when only $5\frac{1}{5}\%$ is lost it can import 3 million tonne, then what is the quantity of wheat grown in the country?

A 600 million tonne

B 500 million tonne

C 400 million tonne

D 700 million tonne

Answer: B

Explanation:

Difference in % of wheat lost = $7 - 26/5 = 9/5\%$

Difference in import = $12 - 3 = 9$ million

As $9/5\%$ of total qty of wheat = 9 million

So, $9x/500 = 9$

Therefore, $x = 500$ million.

Daily Free Topic Test

Data Analysis & Sufficiency

Instructions

In each of these questions two quantities A and B are given. Compare the two quantities

Question 81

Suresh's salary, which is greater than ₹ 10000 is 75% of Sandra's salary. Dutt's salary is 80% of Suresh's salary

A. Sandra's salary

B. Dutt's salary

A if quantity A is greater than quantity B

B if quantity B is greater than quantity A

C if quantities A and B are equal

D if comparison cannot be made

Answer: A

Explanation:

Let Suresh's salary be s and sandra's be x and dutts be y .

$$s = 0.75x \text{ (given)}$$

$$y = 0.8 \cdot 0.75x$$

$$y = 0.6x$$

A. Sandra's salary - x

B. Dutt's salary - y

Quantity A is greater than quantity B

MAT Free Solved Previous Papers

Question 82

The total surface area of a cube = 150.

A. The length of one edge of the cube

B. 4.5

A if quantity A is greater than quantity B

B if quantity B is greater than quantity A

C if quantities A and B are equal

D if comparison cannot be made

Answer: A

Explanation:

Total surface area of the cube = $6a^2$

a = side of the cube

$$6a^2 = 150$$

$$a^2 = 25$$

$$a = 5$$

A. The length of one edge of the cube

B. 4.5

So, quantity A is greater than quantity B

Question 83

A merchant made a profit of ₹ 275 on the sale price of a sweater that cost the merchant ₹ 1225.

A. The profit expressed as a percentage of the sale cost to the merchant

B. The profit expressed as a percentage of the sale price.

A if quantity A is greater than quantity B

B if quantity B is greater than quantity A

C if quantities A and B are equal

D if comparison cannot be made

Answer: A

Explanation:

A merchant made a profit of ₹ 275 on the sale price of a sweater that cost the merchant ₹ 1225.

- A. The profit expressed as a percentage of the sale cost to the merchant
- B. The profit expressed as a percentage of the sale price

$$C.P = 1225$$

$$\text{Profit} = 275$$

Selling price = cost + profit

$$S.P = 1225 + 275$$

$$S.P. = 1500$$

A. The profit expressed as a percentage of the sale cost to the merchant:

$$275/1225 = 22.44\%$$

B. The profit expressed as a percentage of the sale price:

$$275/1500 = 18.33\%$$

So, quantity A is greater than quantity B

Question 84

There are 28 students in a class : all born in 1990.

- A. The probability that all their birthdays are in February.**
- B. The probability that all their birthdays fall on a Friday.**

- A if quantity A is greater than quantity B
- B if quantity B is greater than quantity A
- C if quantities A and B are equal
- D if comparison cannot be made

Answer: B

Explanation:

There are 28 students in a class : all born in 1990.

The probability that all their birthdays are in February. = $1/12$

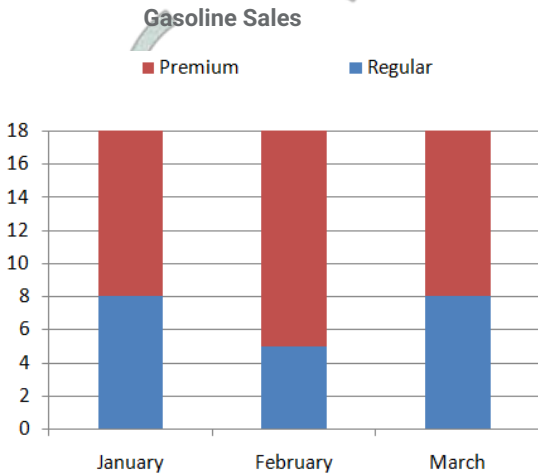
The probability that all their birthdays fall on a Friday. = $1/7$

The chances that all will be born on a particular day of the week is thus higher than the chances of them all being born in the same month.

Download Excellent App for MAT Preparation

Question 85

Based on the graph compare A and B.



- A. The percent change in premium sales from February to March.
- B. The percent change in total sales from January to February.

- A if quantity A is greater than quantity B
- B if quantity B is greater than quantity A
- C if quantities A and B are equal
- D if comparison cannot be made

Answer: A

Explanation:

A. The percent change in premium sales from February to March.

13 to 10

$$\% \text{ change} = \frac{13 - 10}{13} = \frac{3}{13}$$
$$= 23.07\%$$

B. The percent change in total sales from January to February.:

18 to 18

So, 0% change

Hence, quantity A is greater than quantity B

Instructions

Study the information to answer these questions

In a city there are modes of transport available B, C, D, E and F for commuting. Out of the total number of commuters commuting daily in the city 17171 commute only by A. 7359 commute only by B and 22077 commute only by C. 14718 commute only by D, 4906 commute only by E and 7355 commute only by F. 26983 commute by C as well as A, 9812 commute by E as well as A, and 12265 commute by C as well as E daily. Assume that there is no overlap between the commuters of different modes (and their combination) of transport

Question 86

The total number of commuters commuting by A from what percent of the total number of commuters commuting daily?

- A 22
- B 44
- C 14

D 36

Answer: A

Explanation:

$$\text{Total} = 17171 + 7359 + 22077 + 17418 + 4906 + 7355$$

$$= 76286$$

Total number of commuters commuting by A from what percent of the total number of commuters commuting daily =

$$17171/76286 * 100$$

$$= 22.5\%$$

Question 87

What is the difference in percentage of commuters commuting by E and that of B and F taken together?

A 22

B 25

C 13

D 10

Answer: C

Explanation:

$$B = 7355$$

$$F = 7359$$

$$B + F = 14714$$

$$E = 4906$$

$$B+F = 14714/76186$$

$$= 19.3\%$$

$$E = 4906/76186$$

$$= 6.4\%$$

$$\text{Difference} = 19.3 - 6.4$$

$$= 13\%$$

Free Gk Tests

Question 88

The total number of commuters commuting by D and B taken together from what percent of the total number of commuters commuting daily?

A 12

B 6

C 28

D 16

Answer: C

Explanation:

$$B = 7359$$

$$D = 14718$$

$$B+D = 22077$$

The total number of commuters commuting by D and B taken together from what percent of the total number of commuters commuting daily?;

$$22077/76186$$

$$= 28\%$$

Question 89

A majority of the commuters in the city use

A A

B B

C C

D D

Answer: C

Explanation:

26983 commute by C as well as A, 9812 commute by E as well as A, and 12265 commute by C as well as E daily.

People commute by C:

$$22077 + (26983-22077) + (12265-9812)$$

$$= 29436$$

Question 90

The number of commuters commuting by B, D, and F taken together from what percent of the total number of commuters commuting daily by A, C and E taken together?

A 44

B 38

C 43

D 46

Answer: A

Explanation:

Number of commuters commuting by B, D, and F =

$$7359 + 7355 + 14718 = 29432$$

Number of commuters commuting daily by A, C and E =

$$17171 + 29432 + 9812 + 12265 = 66880$$

$$\% = 29432/66880$$

$$= 44\%$$

Daily Free Topic Test

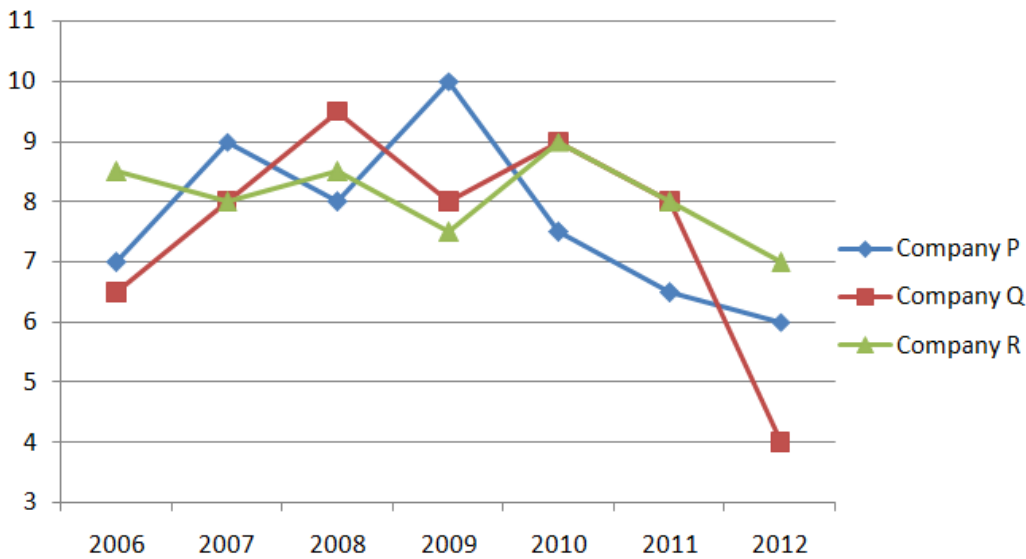
Instructions

Study the following graph to answer these questions

Three different finance companies declare fixed annual rate of interest on the amount invested with them by investors. The rate of interest offered by these companies may differ from year to year depending on the variation in the economy of the country and the

banks rate of interest. The annual rate of interest offered by the three companies P, Q, and R over the year are shown by the line-graph provided below.

Annual Rate of Interest Offered by three Finance Companies Over the Years



Question 91

If two different amount in the ratio 8 : 9 are invested in companies P and Q respectively in 2012, then the amounts received after one year as interest from companies P and Q respectively are in the ratio

- A 2 : 3
- B 3 : 4
- C 6 : 7
- D 4 : 3

Answer: D

Explanation:

Let the amounts invested in 2012 in Companies P and Q be Rs. $8x$ and Rs. $9x$ respectively.

Then, interest received after one year from Company P = 6% of $8x$

$$= \frac{48}{100}x$$

and interest received after one year from Company Q = 4% of $9x$

$$= \frac{36}{100}x$$

$$\text{Required ratio} = \frac{48x}{100} : \frac{36x}{100}$$

$$= 4 : 3$$

Question 92

In 2010, a part of ₹ 30 lakh was invested in company P and the rest was invested in companies Q and R for one year. The total interest, received was ₹ 2.43 lakh. What was the amount invested in company P?

- A ₹ 7 lakh
- B ₹ 8 lakh
- C ₹ 18 lakh

D Cannot be determined

Answer: C

Explanation:

Let Rs. x lakhs be invested in Company P in 2010, the amount invested in Company Q in 2010 = Rs. $(30 - x)$ lakhs.

Total interest received from the two Companies after 1 year = 2.43 =

= Rs. $[(7.5\% \text{ of } x) + \{9\% \text{ of } (30 - x)\}]$ lakhs

Solving for x , we get

$x = 18$ lakhs

Question 93

An investor invested a sum of ₹ 12 lakh in company P in 2008. The total amount received after one year was reinvested in the same company for one more year. The total appreciation received by the investor on his investment was

A ₹ 282000

B ₹ 296200

C ₹ 216000

D ₹ 225600

Answer: D

Explanation:

Amount received from Company P after one year (i.e., in 2009) on investing Rs. 12 lakhs in it

Rs. $[12 + (8\% \text{ of } 12)]$ lakhs

= 12.96 lakhs

Amount received from Company P after one year on investing Rs. 12.96 lakhs in the year 2009:

= Rs. $[12.96 + (10\% \text{ of } 12.96)]$ lakhs

= 14.256 lakhs

Appreciation received on investment during the period of two years

= Rs. $(14.256 - 12)$ lakhs

= Rs. 2.256 lakhs

= Rs. 2,25,600.

MAT Free Solved Previous Papers

Question 94

A sum of Rs. 4.75 lakhs was invested in Company Q in 2009 for one year. How much more interest would have been earned if the sum was invested in Company P?

A ₹ 19000

B ₹ 14250

C ₹ 11750

D ₹ 9500

Answer: D

Explanation:

Difference = Rs. [(10% of 4.75) - (8% of 4.75)] lakhs

= Rs. (2% of 4.75) lakhs

= Rs. 0.095 lakhs

= Rs. 95000

Question 95

An investor invested Rs. 5 lakhs in Company Q in 2006. After one year, the entire amount along with the interest was transferred as investment to Company P in 2007 for one year. What amount will be received from Company P, by the investor?

A Rs. 5,94,550

B Rs. 5,80,425

C Rs. 5,77,800

D Rs. 5,77,500

Answer: B

Explanation:

Amount received from Company Q after one year on investment of Rs. 5 lakhs in the year 2006

= Rs. [5 + (6.5% of 5)] lakhs

= Rs. 5.325 lakhs.

Amount received from Company P after one year on investment of Rs. 5.325 lakhs in the year 2007

= Rs. [5.325 + (9% of 5.325)] lakhs

= Rs. 5.80425 lakhs

= Rs. 5,80,425.

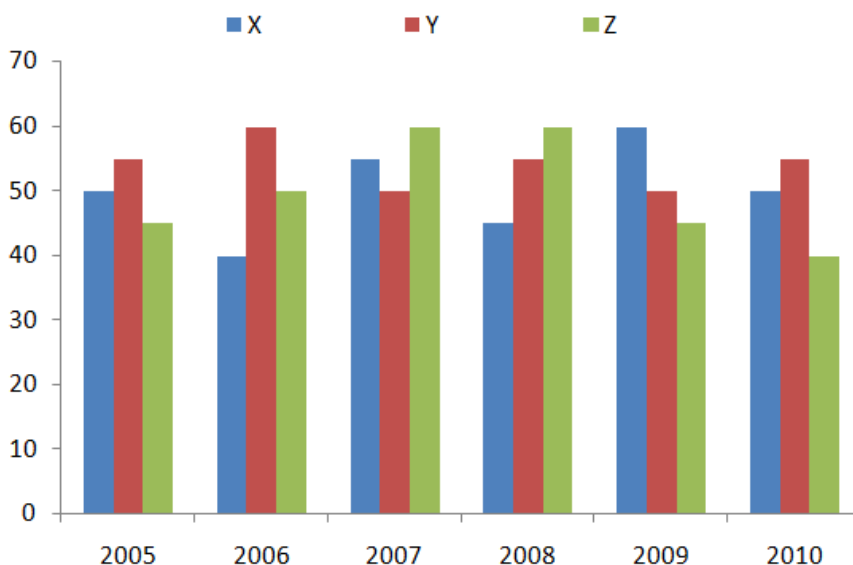
Instructions

Study the graph to answer these questions.

An ice-cream company prepare three different flavours X, Y, and Z. The production of the three flavours over a period of six years has been expressed in the bar graph provided below.

Production of three different flavours of ice-creams X, Y, and Z by a Company over the years

In lakh



Question 96

For which of the following years the percentage of rise/fall production from the previous year is the maximum for the flavour Y?

- A 2007 Decrease
- B 2008 Increase
- C 2009 Decrease
- D 2010 Increase

Answer: A

Explanation:

The percentage rise/fall in production from the previous year for flavor Y during various years are:

In 2006 = $60-55/55 * 100 = 9.09\%$ increase

In 2007 = $60-50/60 * 100 = 16.67\%$ decrease

In 2008 = $55 - 50/50 * 100 = 10\%$ increase

In 2009 = $55-50/50 * 100 = 9.09\%$ decrease

In 2010 = $55-50/50 * 100 = 10\%$ increase

Therefore, Maximum change is decrease of 16.67% during 2007.

Download Excellent App for MAT Preparation

Question 97

For which flavour was the average annual production maximum in the given period?

- A For X
- B For Y
- C For Z
- D Both for X and Y

Answer: B

Explanation:

Average annual productions over the given period for various flavours are:

For Flavour X = $[1/6 * (50+40+55+45+60+50)] = 50$ lakh

For Flavour Y = $[1/6 * (55+60+55+50+50+55)] = 54.17$ lakh

For flavour Z = $[1/6 * (45+50+60+60+45+40)] = 50$ lakh

Maximum average production is for Flavour Y.

Question 98

What is the difference between the average production of flavour X in 2005, 2006 and 2007 and the average production of flavour Y in 2008, 2009 and 2010?

- A 50000
- B 25000
- C 240000
- D 80000

Answer: A

Explanation:

Average production of flavour X in 2005, 2006 and 2007 =

$$1/3 * (50+40+55)$$

$$= 145/3 \text{ lakh}$$

Average production of flavour Y in 2008, 2009 and 2010 =

$$1/3 * (55+50+55)$$

$$= 160/3 \text{ lakh}$$

$$\text{Difference} = 160/3 - 145/3 = 15/3$$

$$= 5 \text{ lakh}$$

$$= 500000$$

Question 99

Which year shows the highest production of ice-cream?

A 2005

B 2007

C 2009

D 2010

Answer: B

Explanation:

$$2005 = 50+45+55 = 150$$

$$2006 = 40+60+50 = 150$$

$$2007 = 55+50+60 = 165$$

$$2008 = 45+55+60 = 160$$

$$2009 = 60+50+45 = 155$$

$$2010 = 55+50+40 = 145$$

2007 is the answer.

Free Gk Tests

Question 100

The total production of flavour Z in 2007 and 2008 is what percentage of the total production of flavour X in 2005 and 2006?

A 130%

B 3.33%

C 33.33%

D 133.33%

Answer: D

Explanation:

$$\text{Required \%} = (60+60)/(50+40) * 100$$

$$= 120/90 * 100$$

= 133.33%

Instructions

Study the Table to answer these questions.

The following table gives the number of candidates Appeared (App.) and Qualifies (Quali.) in ABC entrance examination from different zones (I - IV in different years from 2006 - 2011)

Zone	I		II		III		IV		V		VI	
Year	App.	Quali.	App.	Quali.	App.	Quali.	App.	Quali.	App.	Quali.	App.	Quali.
2006	2989	575	2490	530	2540	430	2534	440	1008	130	2698	498
2007	2438	590	2899	520	2384	470	2653	450	1103	160	2798	610
2008	7534	608	2840	532	2053	502	2234	480	1143	190	2848	580
2009	6524	650	3600	560	2143	510	2468	500	1198	220	3008	490
2010	8746	632	3608	544	2340	544	2549	560	1208	240	2948	560
2011	8429	648	5432	612	2230	588	2630	580	1203	238	3048	534

Question 101

The qualifying percentage from zone V is maximum in which of the following years?

- A 2010
- B 2011
- C 2009
- D 2006

Answer: A

Explanation:

$$2006 = 130/1008 = 12.9$$

$$2007 = 160/1103 = 14.5$$

$$2008 = 190/1143 = 16.62$$

$$2009 = 220/1198 = 18.36$$

$$2010 = 240/1208 = 19.86$$

$$2011 = 238/1203 = 19.78$$

So, 2010 is the year for which zone V is maximum.

Question 102

The total number of qualifying candidates in 2009 is what per cent less than that in 2011?

- A 8.21%
- B 9.89%
- C 6.89%
- D 8.43%

Answer: A

Explanation:

Total number of qualifying candidates in 2009 =

$$650 + 560 + 510 + 500 + 220 + 490$$

$$= 2930$$

total number of qualifying candidates in 2011 =

$$648 + 612 + 588 + 580 + 238 + 534$$

$$= 3192$$

$$\% \text{ required} = 3192 - 2930 / 3192$$

$$= 262 / 3192$$

$$= 8.2\%$$

Daily Free Topic Test

Question 103

Ratio between boys and girls for qualified and for appeared from zone IV in 2009 are 7 : 3 and 3 : 2 respectively. What is the approximate ratio between the boys qualified and girls appeared?

A 2 : 13

B 2 : 5

C 1 : 28

D 1 : 50

Answer: B

Explanation:

2009:

Appeared

$$\text{Boys} = 7/10 * 2468 = 1728$$

$$\text{Girls} = 3/10 * 2468 = 740$$

Qualified

$$\text{Boys} = 3/5 * 500 = 300$$

$$\text{Girls} = 2/5 * 500 = 200$$

$$\text{Ratio required} = 300/740$$

$$= 0.4$$

2/5 approx

Question 104

In which of the following zones is there a continuous increase in the number of students appeared as well as qualified over the years?

A Zone II

B Zone III

C Zone IV

D None of these

Answer: D

Explanation:

Zone 1: not continuous increase

Zone 2: not continuous increase

Zone 3: not continuous increase

Zone 4: not continuous increase

Zone 5: not continuous increase

Zone 6: not continuous increase

Not in any zones there is continuous increase.

Question 105

The number of students appeared from zone V in 2008 and 2011 together is approximately what per cent less than that from zone II in 2007 and 2010 together?

- A 63.5%
- B 50.2%
- C 55.6%
- D 60%

Answer: A

Explanation:

Number of students appeared from zone V in 2008 and 2011 together =

$$1143 + 1203$$

$$= 2346$$

Number of students appeared from zone II in 2007 and 2010 together =

$$2899 + 3608$$

$$= 6507$$

$$\% \text{ required} = \frac{6507 - 2346}{6507}$$

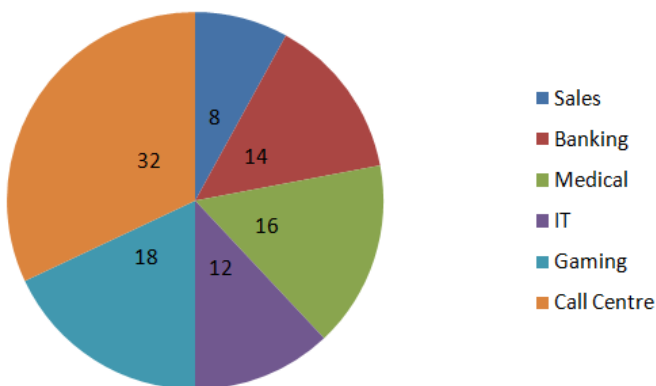
$$= 63.55\%$$

MAT Free Solved Previous Papers

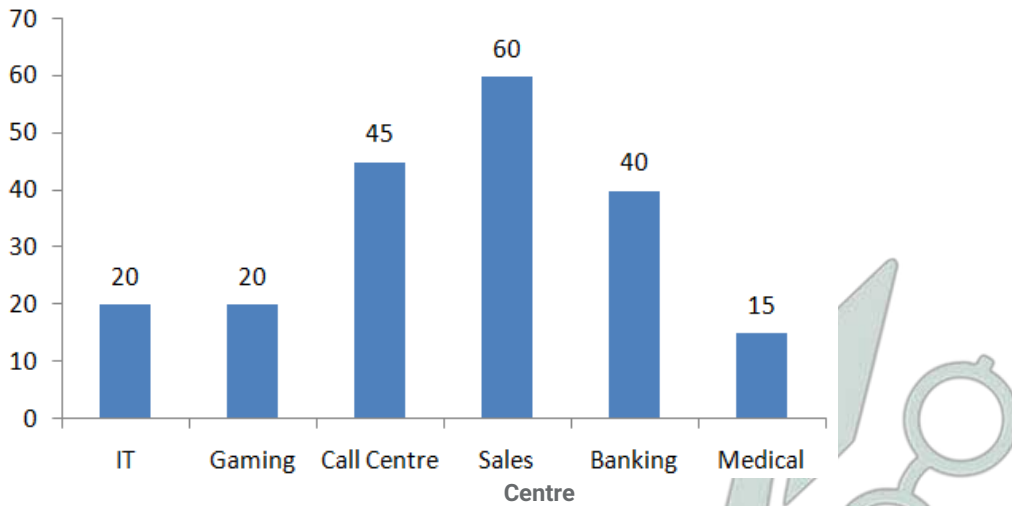
Instructions

Study The following graphs to answer these questions.

The following piechart gives the percentage of adults from various industries working in night shifts. The bar graph shows the percentage of females from these industries working in night shifts. Total number of people = 40250



In percentage



Question 106

What is the approximate average number of females working in night shifts in all the industries?

- A 2227
- B 4481
- C 3326
- D 2523

Answer: A

Explanation:

Total number of female employee = $[12\% \text{ of } 20\% \text{ of } 40250 + 18\% \text{ of } 20\% \text{ of } 40250 + 32\% \text{ of } 40\% \text{ of } 40250 + 8\% \text{ of } 60\% \text{ of } 40250 + 14\% \text{ of } 40\% \text{ of } 40250 + 16\% \text{ of } 10\% \text{ of } 40250] / 6$

Total number of female employee = 13363

Required average number of females = $13363 / 6$

= 2227.16

Question 107

The number of females working in night shifts the gaming industry is what per cent of the total number of people working in the night shifts from all the industries taken together?

- A 5.6
- B 3.6
- C 3.2
- D 4.4

Answer: B

Explanation:

Female workers in Gaming = $18\% \text{ of } 20\% \text{ of } 40250 = 1449$

% required = $[\text{Female workers in Gaming} / \text{Total no of people working in night shifts from all industries}] * 100$

= $[1449 / 40250] * 10$

= 3.6%

Question 108

What is the difference in percentage of males and females working in night shifts in these industries?

- A 33.2
- B 23.8
- C 33.6
- D None of the above

Answer: C

Explanation:

Total number of female workers = 13363

Total number of male workers = 40250 - 13363 = 26887

Difference between male & female workers = 27853 - 13363 = 13524

% required = {Difference between male & female workers/Total workers}*100

% required = 13524/40250 * 100

= 33.6%

Download Excellent App for MAT Preparation

Question 109

If the number of females working in night shifts in banking were 3206, while the number of females in rest of the industries remained unchanged, the new percentage of females working in night shifts will be__. (assume that the total number of people working in night shifts remains constant)

- A 31.56%
- B 33.72%
- C 23.82%
- D Cannot be determined

Answer: A

Explanation:

Female workers in Marketing = 14% of 40% of 40250 = 2254

According to question, Female workers in Marketing = 3206

Difference = 952

After Increment, no of females = Total number of female workers + 952 = 13663

Total number of female workers = 13663-952

= 12711

% required = 12711/40250 * 100

= 31.58%

Question 110

Percentage of males working in night shifts is lowest in which of the following industries?

- A Sales
- B IT and Medical
- C Banking

D Gaming

Answer: A

Explanation:

Sales = 8% of 40% of 40250 = 1288

IT = 12% of 80% of 40250 = 3864

Marketing = 14% of 60% of 40250 = 3381

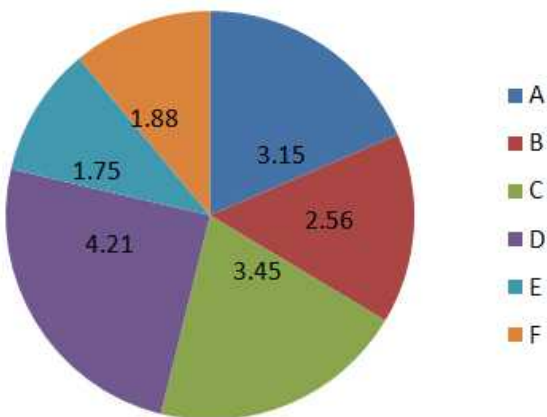
Gaming = 18% of 80% of 40250 = 5796

So, Sales is the industry in which percentage of males working in night shifts is lowest.

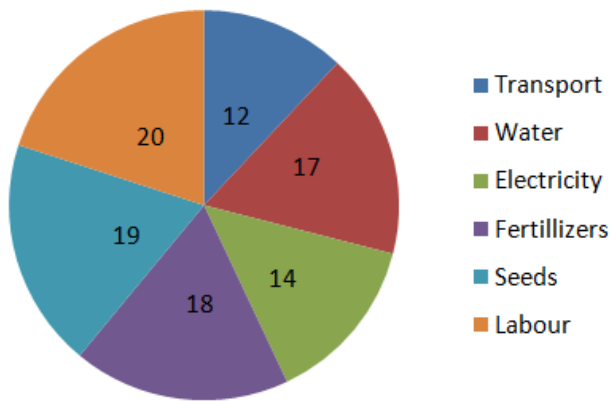
Instructions

Study the graph to answer these questions.

In the year 2012, 17 lakh tonne of a vegetable was produced in a certain State. Its production status in six Districts of that State is shown in pie chart 1. The percentages of total expenditure incurred under different heads for producing this vegetable in any district is shown in pie chart II.



Pie Chart I (Figure in lakh tonne)



Pie Chart II

Question 111

The monthly expenses for water in district B is more/less than the monthly expenditure for electricity in District A by (the total expenditure is ₹1700 per tonne in a year).

A ₹ 82167 less

B ₹ 82167 more

C ₹ 986000 less

D ₹ 1003000 less

Answer: C

Explanation:

Monthly expenses for water in district B = $17/100 \times 2.56$

= 435200

Monthly expenditure for electricity in District A = $14/100 \times 3.15$

= 441000

Difference = $(441000 - 435200)$

= 58000

Expenditure 58000×1700

= ₹ 986000

Free Gk Tests

Question 112

The total expenditure per tonne production of vegetable in these districts is ₹ 5580. The amount spent towards transport in district F is more/less than that in district E by

A more by ₹ 11085600

B less by ₹ 11085600

C more by ₹ 72540000

D less by ₹ 72540000

Answer: C

Explanation:

F = 1.88

E = 1.75

Total expenses for F = 1.88×5580

= 10490.4

Total expenses for E = 1.75×5580

= 9765

Difference = $10490.4 - 9765$

= 725.4 lakh

Question 113

If the expenditure incurred in district D is 20% more than that in district B and ₹ 950000 were spent in district B, then expenses for labour in district D are

A ₹ 1140000

B ₹ 152000

C ₹ 228000

D ₹ 190000

Answer: C

Explanation:

Expenditure incurred in district D is 20% more than that in district B and ₹ 950000 were spent in district B, then expenses for labour in district D :

Expenditure incurred in district D = 1.2×950000

= 1140000

Expenses for labour in district D = 20% of total expenditure

$20/100 \times 1140000$

= 228000

Question 114

The profit earned by the sale of the vegetable in district F is 25%. The sale price being ₹ 10000 per tonne, how much money was spent on fertilizers?

A ₹ 8.46 crore

B ₹ 33.84 crore

C ₹ 33840

D ₹ 2707200000

Answer: D

Explanation:

The profit earned by the sale of the vegetable in district F is 25%. The sale price being ₹ 10000 per tonne, then money was spent on fertilizers:

Total selling price in district F = $1.88 \times 10000 = 18800 \times 10^6$

S.P. = $(1+P\%) \times C.P.$ (C.P. = cost price)

C.P. = $100/125 \times 18800 \times 10^6$

C.P. = 150.4×10^8

Money was spent on Fertilizers = 18% of CP

$0.18 \times 150.4 \times 10^8$

= 27.072×10^8

= ₹ 2707200000

Daily Free Topic Test

Question 115

The profit earned by the sale of the vegetable in district F is 25%. The sale price being ₹ 10000 per tonne, how much money was spent on fertilizers?

A 38 crore

B 27.2 crore

C 25 crore

D 33.875 crore

Answer: B

Explanation:

The profit earned by the sale of the vegetable in district F is 25%. The sale price being ₹ 10000 per tonne, then money was spent on fertilizers:

Total selling price in district F = $1.88 \times 10000 = 18800 \times 10^6$

S.P. = $(1+P\%) \times C.P.$ (C.P. = cost price)

C.P. = $100/125 \times 18800 \times 10^6$

C.P. = 150.4×10^8

Money was spent on Fertilizers = 18% of CP

$0.18 \times 150.4 \times 10^8$

= 27.072×10^8

= ₹ 2707200000

= 27.2 crore

Instructions

Each problem, consists of a problem followed by two Statements T and II. Decide whether the data in the statements are sufficient to answer the question.

Question 116

If no student took test T more than once, how many students took test T?

I. The average (arithmetic mean) of the students' scores on test T was 72.

II. The sum of the students' scores on test T was 2232.

- A if Statement I alone is sufficient but Statement II alone is not sufficient to answer the question
- B if Statement II alone is sufficient but Statement I alone is not sufficient to answer the question
- C if both statements taken together are sufficient to answer the question but neither Statement alone is sufficient
- D if Statements I and II together are not sufficient, and additional data is needed to answer the question

Answer: C

Explanation:

Statement 1: Insufficient

Number of students not able to find

Statement 2: Insufficient

We don't know how many students or the Average

Statements both:

Average = sum/students

let x = students who took test T.

$72 = 2,232/x$

$72x = 2,232$

$x = 2,232/72$

So, sufficient

Question 117

Last year $\frac{4}{5}$ of the applicants for a job on a police force passed the physical examination. If $\frac{3}{4}$ of the applicants who passed the physical examination also passed the written examination, how many applicants passed both examinations?

- I. The number of applicants who did not either examination was equal to the number who passed the physical examination only.
- II. There were a total of 100 applicants.

- A if Statement I alone is sufficient but Statement II alone is not sufficient to answer the question
- B if Statement II alone is sufficient but Statement I alone is not sufficient to answer the question

- C** if both statements taken together are sufficient to answer the question but neither Statement alone is sufficient
- D** if Statements I and II together are not sufficient, and additional data is needed to answer the question

Answer: B

Explanation:

- I. The number of applicants who did not either examination was equal to the number who passed the physical examination only.
 II. There were a total of 100 applicants.

Let total applicants that apply = x

passed physical exam = $\frac{4}{5}x$

Written exam pass = $\frac{3}{4} * \frac{4}{5}x = \frac{3}{5}x$

The applicants passed both examinations is $\frac{3}{5}x$.

We need only x i.e. total number of applicants.

From Statement 2, we can get that, so alone Statement 2 is sufficient.

MAT Free Solved Previous Papers

Question 118

G, P and S are animal species. What is the average life span in years of S?

I. The average life span of S is twice that of P and $\frac{4}{5}$ that of G.

II. The average life span of G is 30 yr longer than that of P and 10 yr longer than that of S

- A** if Statement I alone is sufficient but Statement II alone is not sufficient to answer the question
- B** if Statement II alone is sufficient but Statement I alone is not sufficient to answer the question
- C** if both statements taken together are sufficient to answer the question but neither Statement alone is sufficient
- D** if Statements I and II together are not sufficient, and additional data is needed to answer the question

Answer: C

Explanation:

Statement 1:

$$S=2P$$

$$S=(\frac{4}{5})G$$

we cannot determine.

Statement 2:

$$G=P+30$$

$$G=S+10$$

we cannot determine.

Both statements:

$$S=(\frac{4}{5})G \text{ and } G=S+10 \text{ So,}$$

$$S=(\frac{4}{5})(S+10)$$

$$(\frac{1}{5})S=8$$

$$S=40$$

So, we can determine using both the statements together.

Question 119

There are exactly 6 teams in league X. What was the total number of games played by the 6 teams last season?

I. Each team in league X played each of the other teams atleast once.

II. No team in league X played more than 7 games.

- A if Statement I alone is sufficient but Statement II alone is not sufficient to answer the question
- B if Statement II alone is sufficient but Statement I alone is not sufficient to answer the question
- C if both statements taken together are sufficient to answer the question but neither Statement alone is sufficient
- D if Statements I and II together are not sufficient, and additional data is needed to answer the question

Answer: D

Explanation:

Statement 1:

Each team in league x played each of the other teams at least once So, if each team played each of the other teams ONLY once then there was total games played

$6C2 = 15$. but if each team played each of the other teams TWICE then there was total of $2*6C2 = 30$ games played.

Not sufficient

Statement 2:

No team in league x played more than 7 games.

So, insufficient.

Both together:

If each team played each of the other teams only once then there was total of $6C2 = 15$ games played (each of the 6 teams played 5 games), but if after each

team played each of the other teams only once, some two teams played between each other once more then the total number of games played was 16 (4 teams

played 5 games and 2 teams played 6 games).

Not sufficient.

Question 120

A swimming club that sold only individual and family memberships charged ₹ 300 for an individual membership. If the club's total revenue from memberships was ₹ 480000, what was the charge for a family membership?

I. The revenue from individual memberships was $\frac{1}{4}$ of the total revenue from memberships.

II. The club sold 1.5 times as many family memberships as individual memberships.

- A if Statement I alone is sufficient but Statement II alone is not sufficient to answer the question
- B if Statement II alone is sufficient but Statement I alone is not sufficient to answer the question
- C if both statements taken together are sufficient to answer the question but neither Statement alone is sufficient
- D if Statements I and II together are not sufficient, and additional data is needed to answer the question

Answer: C

Explanation:

Statement 1:

Since we don't know total individual membership we cant determine revenue from family membership from this condition.

Statement 2:

Let us say x is total no. of individual memberships; and y be total family memberships.

from the statement we have $y = 1.5x$

and from the question we have $x + y = 480000$

So, value of y can be determined.

So, sufficient.

Download Excellent App for MAT Preparation

Intelligence & Critical Reasoning

Instructions

Read the following information to answer these questions.

There are six students J, K, L, M, N and O. J and K belong to Priya Palace and the rest belong to Nisha Palace. M and O are tall while other students are short. J, L and M are identified by wearing jeans while others are not wearing caps.

Question 121

Which two students are not wearing jeans and are short?

- A L and N
- B K and N
- C J and N
- D K and O

Answer: B

Explanation:

J Priya Palace Short Jeans

K Priya Palace Short Cap

L Nisha Palace Short Jeans

M Nisha Palace Tall Jeans

N Nisha Palace Short Cap

O Nisha Palace Tall Cap

So, the answer would be option b) K and N

Free Gk Tests

Question 122

Which short student of Nisha Palace is wearing a cap?

- A O
- B L
- C M
- D N

Answer: D

Explanation:

J Priya Palace Short Jeans

- K Priya Palace Short Cap
- L Nisha Palace Short Jeans
- M Nisha Palace Tall Jeans
- N Nisha Palace Short Cap
- O Nisha Palace Tall Cap

So, the answer would be option d)N

Question 123

Which tall student of Nisha Palace is wearing jeans?

- A O
- B N
- C M
- D L

Answer: C

Explanation:

- J Priya Palace Short Jeans
- K Priya Palace Short Cap
- L Nisha Palace Short Jeans
- M Nisha Palace Tall Jeans
- N Nisha Palace Short Cap
- O Nisha Palace Tall Cap

So, the answer would be option c) M

Instructions

Read the following information to answer these questions.

There are six employees sitting in a competitive examination, namely K, L, M, N, O and P. K and L are from Dehradun while M, N, O and P are from Mangalore. N and P are tall while rest are short. L, O and P are males while rest of them are females.

Question 124

Who is the tall female from Mangalore?

- A M
- B P
- C O
- D N

Answer: D

Explanation:

- K Dehradun Short Female
- L Dehradun Short Male
- M Manglore Short Female
- N Manglore Tall Female
- O Manglore Short Male
- P Dehradun Tall Male

So, the answer would be option d)N

Daily Free Topic Test

Question 125

Who is the short female from Dehradun?

- A M
- B L
- C K
- D N

Answer: C

Explanation:

K Dehradun Short Female

L Dehradun Short Male

M Manglore Short Female

N Manglore Tall Female

O Manglore Short Male

P Dehradun Tall Male

So, the answer would be option c)K

Question 126

Who is the tall male from Mangalore?

- A O
- B P
- C M
- D N

Answer: B

Explanation:

K Dehradun Short Female

L Dehradun Short Male

M Manglore Short Female

N Manglore Tall Female

O Manglore Short Male

P Dehradun Tall Male

So, the answer would be option b)P.

Instructions

Read the following information to answer these questions.

There are six books/volumes kept in a steel rack/shelf and are labelled as L, M, N, O, P and Q. M, P, N and Q have blue covers while others have red covers. L, M and O are new volumes while the rest are old volumes. L, M and N are law books while the rest are engineering books.

Question 127

Which two volumes are old engineering books having blue covers?

- A P and N
- B P and O
- C P and Q
- D Q and L

Answer: C

Explanation:

- L Red New Law
- M Blue New Law
- N Blue Old Law
- O Red New Engg
- P Blue Old Engg
- Q Blue Old Engg

So, the answer would be option c) P and Q

MAT Free Solved Previous Papers

Question 128

Which new volumes engineering book has a red cover?

- A L
- B O
- C Q
- D P

Answer: B

Explanation:

- L Red New Law
- M Blue New Law
- N Blue Old Law
- O Red New Engg
- P Blue Old Engg
- Q Blue Old Engg

So, the answer would be option b) O

Question 129

Which new volume law book has a blue cover?

- A P
- B N
- C L

D M

Answer: D

Explanation:

L Red New Law

M Blue New Law

N Blue Old Law

O Red New Engg

P Blue Old Engg

Q Blue Old Engg

So, the answer would be option d)M

Instructions

Read the following information to answer these questions.

Ramesh, Kailash, Avinash and Jagan are good friends studying in a school. Three of them stay away from the school and one stays nearer to it. Two study in class IV, one in class V and one in class VI. They study Hindi, Maths, Social Science and Science. One of these four friends is good at all the four subjects while another is weak in all the four subjects. Ramesh stays away from the school and is good at Maths only while Kailash is weak in Maths only and stays close to the school. Neither of these two study in class V or VI. One who is good at all the subjects is studying in class V. Avinash is not studying in class VI.

Question 130

Name the boy who is good at all the subjects

A Kailash

B Jagan

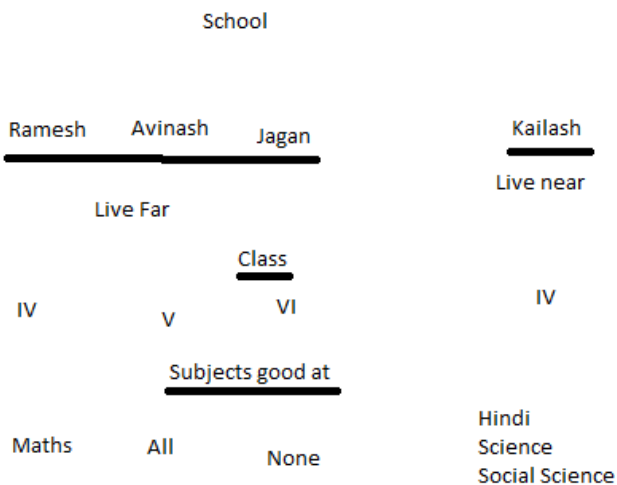
C Avinash

D Ramesh

Answer: C

Explanation:

Decode all the information and represent them in a diagram.



So, the answer would be option c)Ramesh

Download Excellent App for MAT Preparation

Question 131

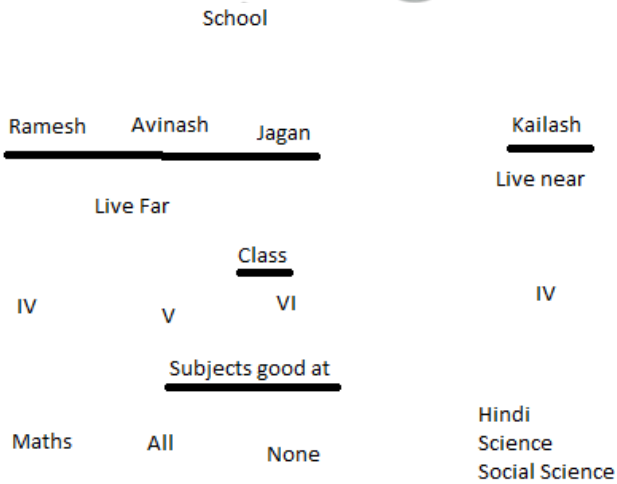
Name the boy who is weak in all the subjects.

- A Ramesh
- B Kailash
- C Jagan
- D Avinash

Answer: C

Explanation:

Decode all the information and represent them in a diagram.



So, the answer would be option c)Jagan.

Question 132

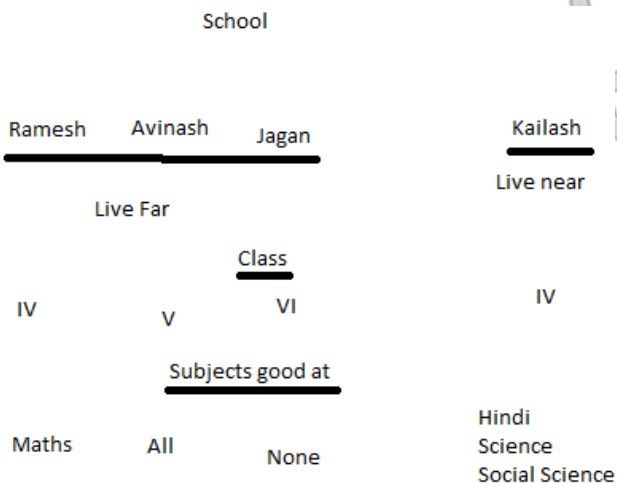
Which two boys are good at Mathematics?

- A Jagan and Kailash
- B Kailash and Avinash
- C Ramesh and Avinash
- D Ramesh and Jagan

Answer: C

Explanation:

Decode all the information and represent them in a diagram.



So, the answer would be option c)Ramesh and Avinash

Instructions

Read the following information to answer these questions.

Five friends namely Kapil, Govind, Hans, Raju and Jitu have very good characteristics and are being considered for various awards. Govind, Kapil and Hans are sincere. Kapil, Raju and Jitu are very brave. Raju, Hans and Jitu are very truthful. Kapil, Govind and Jitu are courteous.

Question 133

Which combination of friends is 'Courteous' but not 'Brave'?

- A Govind and Kapil
- B Jitu and Hans
- C Hans and Raju
- D None of these

Answer: D

Explanation:

Sincere - Govind, Kapil and Hans

Brave - Kapil, Raju and Jitu

Truthful - Raju, Hans and Jitu

Courteous - Kapil, Govind and Jitu

There is no such pair.

So, the answer would be option d)None of these

Free Gk Tests

Question 134

Which of the following persons is 'Courteous' but neither Truthful nor 'Brave'?

- A Hans
- B Raju
- C Kapil
- D Govind

Answer: D

Explanation:

Sincere - Govind, Kapil and Hans

Brave - Kapil, Raju and Jitu

Truthful - Raju, Hans and Jitu

Courteous - Kapil, **Govind** and Jitu

Govind is Courteous and sincere but neither Truthful nor Brave.

So, the answer would be option d)Govind

Question 135

Which of the following persons is neither 'Courteous' nor 'Brave'?

- A Kapil

- B Govind
- C Hans
- D Raju

Answer: C

Explanation:

Sincere - Govind, Kapil and **Hans**

Brave - Kapil, Raju and Jitu

Truthful - Raju, **Hans** and Jitu

Courteous - Kapil, Govind and Jitu

Hans is Sincere and Truthful , neither Courteous nor Brave.

So, the answer would be option c)Hans

Instructions

Each of these questions has a statement followed by two Conclusions I and II. Consider the statement and the following conclusions. Decide which of the conclusions follows from the statement.

Question 136

Statement Parents are prepared to pay any price for an elite education to their children.

Conclusions

I. All parents these days are very well off.

II. Parents have an obsessive passion for a perfect development of their children through good schooling

- A if Conclusion I follows
- B if Conclusion II follows
- C if either Conclusion I or II follows
- D if neither Conclusion I nor II follows

Answer: D

Explanation:

Statement Parents are prepared to pay any price for an elite education to their children.

Conclusions

I. All parents these days are very well off. - It is not necessary that all parents are elite. There are parents who take loans for education of their children.

II. Parents have an obsessive passion for a perfect development of their children through good schooling. - Obsession is an exaggerated word.

So, the answer would be option d)Neither Conclusion I nor II follows

Daily Free Topic Test

Question 137

Statement I know nothing except the fact of my ignorance.,,

Conclusions

I. Writer 's knowledge is very poor.

II. The world of knowledge is too vast to be explored by a single person.

- A if Conclusion I follows

- B** if Conclusion II follows
- C** if either Conclusion I or II follows
- D** if neither Conclusion I nor II follows

Answer: B

Explanation:

Statement I know nothing except the fact of my ignorance.,,

Conclusions

I. Writer 's knowledge is very poor. - Writer's knowledge can not be judged by the given statement.

II. The world of knowledge is too vast to be explored by a single person. - It is a quote given by the Greek philosopher Socrates which implies that knowledge of world is too vast to be explored by a single person.

So, the answer would be option b)if Conclusion II follows

Question 138

Statement:

Quality has a price tag. India is allocating lots of funds to education.

Conclusions:

I. Quality of education in India would improve soon.

II. Funding alone can enhance quality of education.

- A** if Conclusion I follows
- B** if Conclusion II follows
- C** if either Conclusion I or II follows
- D** if neither Conclusion I nor II follows

Answer: A

Explanation:

Statement Quality has a price tag. India is allocating lots of funds to education.

Conclusions

I. Quality of education in India would improve soon. - Since govt. is allocating funds for education , measures will be taken to improve the quality of education.

II. Funding alone can enhance quality of education. - Funding is not the only way to improve quality of education.

So, the answer would be option a)if Conclusion I follows

Instructions

In each of these questions, two Statements I and II are given. These may have a cause and effect relationship or may have independent causes or be the effects of independent causes.

Question 139

Statements

I. International Agency for Research on Cancer (IARC) – an arm of the world health organisation (WHO) – will meet in France to take a call on bitumen, the black, oily material used to make roads – to be branded as 'probably carcinogenic, i.e., causing cancer to humans.

II. IARC has asked experts from across the globe to submit data from their research studies conducted on bitumen so as to help it to come to some conclusion.

- A** if Statement I is the cause and Statement II is its effect
- B** if Statement II is the cause and Statement I is its effect
- C** if both the Statements I and II are effects of independent causes

D if both the Statements I and II are effects of some common cause

Answer: D

Explanation:

IARC is taking measures to check health hazards created by bitumen. Both the actions may have been taken because of some survey or research results.

So, the answer would be option d) if both the Statements I and II are effects of some common cause

MAT Free Solved Previous Papers

Question 140

Statements

I. In a survey conducted recently in America, almost 70% of Americans said they find it easier to care for their cars than their personal health. 40% of them said they would be more likely to address their issues with their car than their health

II. Based on the above survey, the national campaign network for men's health launched this awareness through Abbott Laboratories to encourage men to visit their doctors more often to enjoy better health.

- A if Statement I is the cause and Statement II is its effect
- B if Statement II is the cause and Statement I is its effect
- C if both the Statements I and II are effects of independent causes
- D if both the Statements I and II are effects of some common cause

Answer: A

Explanation:

The results of survey triggered national campaign network for men's health to launch awareness program through Abbott Laboratories.

So, the answer is option a) if Statement I is the cause and Statement II is its effect

Question 141

Statements

I. The local co-operative credit society has decided to stop giving loans to farmers with immediate effect.

II. A large number of credit society members have withdrawn major parts of their deposits from the credit society.

- A if Statement I is the cause and Statement II is its effect
- B if Statement II is the cause and Statement I is its effect
- C if both the Statements I and II are effects of independent causes
- D if both the Statements I and II are effects of some common cause

Answer: B

Explanation:

Since most of the deposits are withdrawn by members of the society, there will be shortage of cash deposits, which is why credit society has decided to stop giving loans to farmers with immediate effect.

So, the answer would be option b) if Statement II is the cause and Statement I is its effect.

Instructions

Each of these questions consists of a pair of words bearing a relationship. From amongst the alternatives, choose the pair that best illustrates a similar relationship.

Question 142

VALUELESS : INVALUABLE

- A Costly : Cut-rate
- B Miserly : Philanthropic
- C Frugality : Wealth
- D Thriftiness : Cheap

Answer: B

Explanation:

VALUELESS is opposite of INVALUABLE , similarly Miserly is opposite of Philanthropic.

So, the answer would be option b) Miserly : Philanthropic

Download Excellent App for MAT Preparation

Question 143

PATRIOTISM : CITIZENS

- A Morality : Truthfulness
- B Character: Values
- C Concentration : Students
- D Homage : Martyrs

Answer: C

Explanation:

Patriotism is a quality which Citizens should have, Similarly, Concentration is a quality which students should have.

Question 144

TRAVELLER : DESTINATION

- A Beggar : Donation
- B Accident : Hospital
- C Teacher : Education
- D Refugee : Shelter

Answer: D

Explanation:

Traveller keeps going towards destination , while refugee goes to shelter.

So, the answer would be option d) Refugee : Shelter

Question 145

HORSE : EQUINE

- A Lion : Carnivorous
- B Cat : Feline
- C Table : Furniture

D Dog : Vulpine

Answer: B

Explanation:

Horse belongs to Equine family , similarly cat belongs to feline family.

So, the answer would be option b)Cat : Feline

Free Gk Tests

Instructions

Complete the series by replacing the '?' mark

Question 146

OAC, PBD, QCE, RDF, ?

A SGH

B SHI

C SEG

D SIJ

Answer: C

Explanation:

In the given series, OAC, PBD, QCE, RDF, ?

1st, 2nd and 3rd letters in each term are a series of letters as per alphabetical order. Similarly, next term would be SEG

Question 147

ABCD, BCDA, CDAB, ?, ABCD

A BADC

B DABC

C DBAC

D DACB

Answer: B

Explanation:

In the given series, ABCD, BCDA, CDAB, ?, ABCD

We can observe that subsequent term is formed by moving the first letter of previous term to last position.

Therefore, Missing term would be DABC

Question 148

AMV, BNW, COX, ?, EQZ

A DMO

B DPY

C DYP

D DLZ

Answer: B

Explanation:

In the given series, AMV, BNW, COX, ?, EQZ

first letter in each term is A,B,C,.. Therefore next letter is D

Second letter in each term is M,N,O,.. Therefore next letter is P

Third letter in each term is V,W,X,.. Therefore next letter is Y

Therefore, missing term is DPY

Daily Free Topic Test

Question 149

BCD, BDC, CBD, ?, DCB

A CDB

B CCD

C CDE

D DCB

Answer: A

Explanation:

The pattern is :

B -> CD , DC

C -> BD , DB

D -> CB , BC

So, the answer would be option a)CDB

Question 150

XYZ, XZY, YZX, ?, ZXY

A XZZ

B YXZ

C YZW

D ZYX

Answer: B

Explanation:

XYZ, XZY, YZX, ?, ZXY

The pattern is :

X -> YZ , ZY

Y -> ZX , XZ

Z -> XY , YX

So, the answer would be option b)YXZ

Instructions

For the following questions answer them individually

Question 151

There are six members in a family. A is the father of D, E is the grandfather of D. B, nephew of F is the daughter-in-law of C. F is the uncle of D. What is the relationship of C with F?

- A Sister
- B Mother-in-Law
- C Mother
- D Grandmother

Answer: A

Explanation:

This is an incorrect previous year question from "MAT"

How C is related with family members it is not mentioned.

B, nephew of F is the daughter-in-law of C. - How can nephew be daughter in law.

MAT Free Solved Previous Papers

Question 152

In a family there are seven persons, comprising married couples, T is the only son of M and the grandson of K. M is a widower. M and R are brothers and W is the daughter-in-law of J who is the mother of R and has grandson 'D'. How is D related to M?

- A Son
- B Son-in-law
- C Nephew
- D Brother

Answer: C

Explanation:

T is the son of M and grandson of K. This is not clear

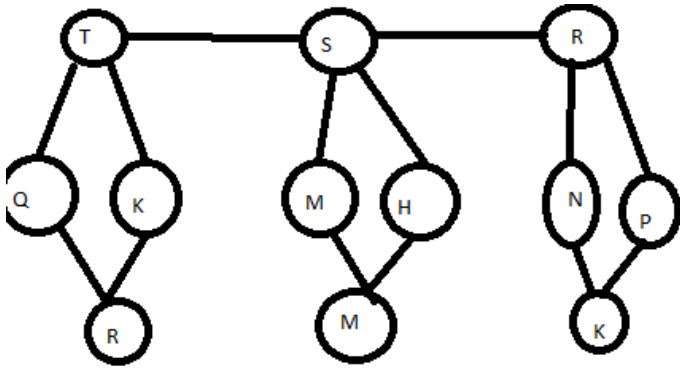
Question 153

T, S and R are three brothers. T's son Q is married to K and they have one child Rahul blessed to them. M the son of S is married to H and this couple is blessed with a daughter Madhvi R has a daughter N who is married to P. This couple has one daughter Karuna born to them. How is Madhvi related to S?

- A Daughter
- B Niece
- C Granddaughter
- D None of these

Answer: C

Explanation:



So, the answer would be option c) Granddaughter

Question 154

If 27 March, 1995 was a Monday, then what day of the week was 1 November, 1994?

- A Sunday
- B Monday
- C Tuesday
- D Wednesday

Answer: C

Explanation:

Here, 27th March 1995 was Monday. Now for calculating total number of odd days. First, we calculate total number of days till 1 Number 1994

Number of days in March 1995 = 27

Number of days in February 1995 = 28

Number of days in January 1995 = 31

Number of days in December 1994 = 31

Number of days in November 1994 = 29

Total number of days = 146

Number of odd days = $146/7 = 20\frac{6}{7}$

So, 6 odd days.

On November 1, 1994 = Monday - 6

= Tuesday

So, the answer would be option c) Tuesday

Download Excellent App for MAT Preparation

Question 155

The last day of a century cannot be either.

- I. Tuesday
- II. Thursday
- III. Saturday
- IV. Sunday

- A I and II
- B I and IV
- C I, II and III
- D I, III and IV

Answer: C

Explanation:

100 years contain 5 odd days.

=> Last day of 1st century is Friday.

200 years contain $(5 \times 2) \equiv 3$ odd days.

=> Last day of 2nd century is Wednesday.

300 years contain $(5 \times 3) = 15 \equiv 1$ odd day.

=> Last day of 3rd century is Monday.

400 years contain 0 odd day.

=> Last day of 4th century is Sunday.

This cycle is repeated.

=> Last day of a century cannot be Tuesday or Thursday or Saturday.

So, the answer would be option c) I, II and III

Question 156

Five senior citizens are living in a multistoried building. Mr Muan lives in a flat above Mr Ashokan, Mr Lokesh lives in a flat below Mr Gaurav, Mr Ashokan lives in a flat above Mr Gaurav and Mr Rakesh lives in a flat below Mr Lokesh. Who lives in the topmost flat?

- A Mr Lokesh
- B Mr Gaurav
- C Mr Muan
- D Mr Rakesh

Answer: C

Explanation:

Order of flats would be :

Muan , Akaksh , Gaurav , Lokesh , Rakesh

So, the answer would be option c) Muan

Instructions

Each of these questions has an Assertion 'A' and a Reason 'R'.

Question 157

Assertion (A): A body weighs less when immersed in water.

Reason (R): Newton's law explains the above phenomenon.

- A if both A and R are true and R is the correct explanation of A
- B if both A and R are true but R is not the correct explanation of A
- C if A is true but R is false
- D if A is false but R is true

Answer: C

Explanation:

Newton's law discusses about the Force , while a body weighs less when immersed in water because of buoyancy.

So, the answer would be option c) if A is true but R is false

Free Gk Tests

Question 158

Assertion (A): India's 'Republic Day' falls on 26th January.

Reason (R): Constitution of India, declaring India as a 'Republic', came into force on 26th January 1950.

- A if both A and R are true and R is the correct explanation of A
- B if both A and R are true but R is not the correct explanation of A
- C if A is true but R is false
- D if A is false but R is true

Answer: A

Explanation:

Constitution was enforced on 26th Jan , 1950. To remember this , it was celebrated as Republic day.

So, the answer would be option a)if both A and R are true but R is the correct explanation of A

Question 159

Assertion (A): India is a democracy.

Reason (R): India is a developing country.

- A if both A and R are true and R is the correct explanation of A
- B if both A and R are true but R is not the correct explanation of A
- C if A is true but R is false
- D if A is false but R is true

Answer: B

Explanation:

Both assertion and reason are correct statements , but India being democratic an developing country are no where connected.

So, the answer would be option b)if both A and R are true but R is not the correct explanation of A

Question 160

Assertion (A): India is a secular country.

Reason (R): Indian people can practice any faith they like.

- A if both A and R are true and R is the correct explanation of A
- B if both A and R are true but R is not the correct explanation of A
- C if A is true but R is false
- D if A is false but R is true

Answer: B

Explanation:

Both options A and B are correct , but B is not the reason for A. India is a secular country because our constitution encompasses idea of seculraism.

Infact ,A is the reason for B.

So, the answer would be option B)if both A and R are true but R is not the correct explanation of A

Daily Free Topic Test

Indian & Global Development

Instructions

For the following questions answer them individually

Question 161

Which among the following is/are correct about participatory notes or P-Notes?

- A They are derivative instruments
- B They are used by Foreign Institutional Investors (FIIs) who are not registered with SEBI.
- C They are used on Indian shares but at a location outside India
- D All of the above

Answer: D

MAT Free Solved Previous Papers

Question 162

The Supreme Court of India in its judgment in September, 2013 in Writ Petition (C) No. has directed that the Election Commission of India to have a "None of the Above" (NOTA) option on the ballot papers and EVMs.

- A 161 of 2004
- B 121 of 2008
- C 47 of 2005
- D 71 of 2009

Answer: A

Question 163

Which of the following is/are the key objectives of the Rashtriya Uchchatar Shiksha Abhiyan (RUSA), the flagship program of the Government of India for higher education

- A To improve access, equity and quality in higher education through planned development of higher education at the state level
- B It is proposed to improve the Gross Enrolment Ratio from 19% at present to 30% by 2020
- C It will help create new academic institutions, and expand the existing institutions, that are self-reliant in terms of quality education and professional management.
- D All of the above

Answer: D

Question 164

The Government of India has recently approved the constitution of the 7th Pay Commission to implement its recommendations to revise the salary and pension, of its staff from

- A January 2014
- B January 2016
- C January 2015
- D January 2017

Answer: C

Download Excellent App for MAT Preparation

Question 165

How much gross budgetary support is approved by the Cabinet Committee on Economic Affairs for implementation of the National AIDS Control Programme Phase-IV by the Department of AIDS Control, Ministry of Health and Family Welfare, GoI?

- A ₹ 8632.77 crore
- B ₹ 7512.31 crore
- C ₹ 9131.47 crore
- D ₹ 6789.73 crore

Answer: A

Question 166

Which of the following is/are the salient feature(s) of the National Food Security Bill?

- A 75% of rural and 50% of the urban population entitled to 5 kg of rice, wheat and coarse grains at ₹ 3, ₹ 2, ₹ 1 per kg respectively per month
- B Pregnant women and lactating mothers entitled to nutritious meals and maternity benefit of atleast ₹ 6000 for six months
- C Central Government will provide funds to states in case of food grain short supply and will protect the current allocation to states
- D All of the above

Answer: D

Question 167

Who among the following has won the gold medal in the men,s single sculls at the Asian Senior Rowing Championships in China in 2013?

- A Bajrang Lal Takhar
- B Swam Singh Virk
- C Robin P Ulahannan
- D Mohammed Ahmed

Answer: B

Free Gk Tests

Question 168

Which one of the following states has been recently awarded by the Government of India as best state in implementing the Maintenance and Welfare of Parents and Senior Citizens (MWPSA) Act, 2007 for providing services and facilities to senior citizens?

- A Madhya Pradesh
- B Kerala
- C Himachal Pradesh
- D Manipur

Answer: A

Question 169

Which among the following multinational companies is the world's most valuable brand of 2013 as per Interbrand's Best Global Brands report?

- A Google
- B Microsoft
- C Walmart
- D Apple

Answer: D

Question 170

How much was the total dividend paid by NTPC Ltd at 57.5% of its paid-up capital for the financial year 2012-2013?

- A ₹ 1649.09 crore
- B ₹ 4741.00 crore
- C ₹ 2135.17 crore
- D ₹ 3351.56 crore

Answer: B

Daily Free Topic Test

Question 171

In which sport/game has Nikhat Zareen won the silver medal for India at the Youth World Championships in 2013?

- A Boxing
- B Badminton
- C Tennis
- D Judo

Answer: A

Question 172

Which among the following banks celebrated its Platinum Jubilee in October 2013?

- A Yes Bank
- B ICICI Bank
- C J&K Bank
- D HDFC Bank

Answer: C

Question 173

Which one of the following companies has launched its flagship smart phone G2 in September 2013 in India?

- A Lenovo
- B Sony
- C Apple
- D LG

Answer: D

MAT Free Solved Previous Papers

Question 174

Who among the following athletes created a new marathon world record in the Berlin marathon held in September 2013?

- A Eliud Kipchoge
- B Wilson Kipsang
- C Patrick Makau
- D Haile Gebreselassie

Answer: B

Question 175

'Nirmal Bharat Abhiyan' (NBA) is an initiative of the

- A Ministry of Drinking Water and Sanitation, Gol
- B Ministry of Minority Affairs, Gol
- C Ministry of Information and Broadcasting, Gol
- D Ministry of Helth & Family Welfare, Gol

Answer: A

Question 176

Which among the following countries faced the first Government shutdown in seventeen years in October 2013?

- A USA
- B UK
- C France
- D Germany

Answer: A

Download Excellent App for MAT Preparation

Question 177

Archaeological Survey of India and jointly launches in October 2013, a unique initiative to take India's heritage sites online.

- A Google
- B MSN
- C Yahoo
- D Bing

Answer: A

Question 178

The 11th India-ASEAN Summit and the 8th East Asian Summit took place in October 2013 at

- A Indonesia
- B Brunei
- C Malaysia
- D Vietnam

Answer: B

Question 179

Who has won the men's singles title of the US open Grand Slam tennis 2013?

- A Andy Murray
- B Novak Djokovic
- C Rafael Nadal
- D JM Del Potro

Answer: C

Free Gk Tests

Question 180

The Gross Direct Tax collections in india during April-September of the FY. 2013-2014 is up by and stood at ₹ 301250 crore.

- A 7.55%
- B 8.15%
- C 10.66%
- D 13.25%

Answer: C

Question 181

India and have signed an MoU in October 2013 to undertake a joint feasibility study of a High Speed Railway System on the Mumbai-Ahmedabad route.

- A Korea
- B Germany
- C China
- D Japan

Answer: D

Question 182

As per the latest report of the Ministry of Corporate Affairs, GoI, how many companies are in the official Registry as on 31st August 2013?

- A 13.45 lakh
- B 8.99 lakh
- C 2.57 lakh
- D 10.15 lakh

Answer: A

Daily Free Topic Test

Question 183

Who among the following has been inducted into the prestigious National Academy of Engineering, United States for his contribution to industrial development in India and the world?

- A Azim H Premji
- B E Sreedharan
- C Chandra Shekar
- D Ratan Tata

Answer: D

Question 184

Which among the following countries has started Import of power (electricity) from India in October 2013?

- A Sri Lanka
- B Bhutan
- C Bangladesh
- D Myanmar

Answer: C

Question 185

Which of the following Oceanographic Research Vessels has been dedicated to the nation by the Government of India in October 2013?

- A INS Ranvijay
- B RV Samudra Ratnakar
- C INS Jalashwa
- D MV Bingo

Answer: B

MAT Free Solved Previous Papers

Question 186

Which among the following is the top Internet Service Provider (ISP) in India in terms of market share (based on subscriber base) with 9.97 million?

- A MTNL
- B Bharti Airtel
- C BSNL
- D Hathway

Answer: C

Question 187

Francois Englert and Peter W Higgs have been awarded the Nobel Prize 2013 in the field of

- A Medicine
- B Literature
- C Economics
- D Physics

Answer: D

Question 188

Who among the following has won the 'Sakharov Human Rights Prize 2013' given by the European Union (EU)?

- A Malala Yousafzai
- B Nelson Mandela
- C Kofi Annan
- D MS Swaminathan

Answer: A

Download Excellent App for MAT Preparation

Question 189

The BRIGS Finance Ministers' and Central Bank Governors' meeting took place in October 2013 at

- A Washington
- B Delhi
- C Moscow
- D Rio de Janeiro

Answer: A

Question 190

As per the latest telecom subscription data (July 2013) released by TRAI, BSNL and MTNL, the two PSIJ operators hold of the wireless market share (based on subscriber base).

- A 11.70%
- B 88.30%
- C 43.17%
- D 69.14%

Answer: A

Question 191

Who has won the 100th edition of the Tour de France Cycling Championships?

- A Marcel Kittel
- B Chris Froome
- C Marco Pantani
- D Jan Ullrich

Answer: B

Free Gk Tests

Question 192

"International Literacy Day" is annually celebrated by UNESCO on

- A April 22
- B November 14
- C August 9
- D September 8

Answer: D

Question 193

Who among the following former Indian cricketers has become the brand ambassador for the National Tobacco Control Campaign of the Government of India?

- A Saurav Ganguly

- B Anil Kumble
- C Rahul Dravid
- D Md Azharuddin

Answer: C

Question 194

Recently, the Department of Post, Ministry of Communication and Information Technology has allotted a Customized Pin Code to the Supreme Court of India.

- A 110251
- B 110201
- C 110301
- D 110222

Answer: B

Daily Free Topic Test

Question 195

In September 2013, where did the meeting between Indian and Pakistan Prime Ministers take place?

- A Washington
- B London
- C New York
- D Brussels

Answer: C

Question 196

The President of India launched the September 2013 which is expected to provide an identity to Khadi.

- A Khadi Retail Showroom
- B Khadi Online Shop
- C Khadi Association Chapter
- D Khadi Mark

Answer: D

Question 197

Who is the author/writer of the recently released book 'Gandhi Before India'?

- A Charles Di Salvo
- B Joseph Lelyveld

C Ramachandra Guha

D Kuldip Nayar

Answer: C

MAT Free Solved Previous Papers

Question 198

Which one of the following countries has won the Asia Cup hockey tournament held in 2013?

A Korea

B Pakistan

C India

D Malaysia

Answer: A

Question 199

Mayaram Committee was formed by the Government of India to examine the

A alleged irregularities in the functioning of Ind Olympic Association

B alleged irregularities at the National Spot Exchange Ltd (NSE)

C progress in 2G spectrum scam case

D progress in coal block allocation scam

Answer: B

Question 200

The 9 edition of 'Naseem Al Bahr', the biennial naval exercise, took place between the India, Navy and

A Bangladesh Navy

B United Arab Emirates Navy

C Royal Omani Navy

D Indonesian Navy

Answer: C

Download Excellent App for MAT Preparation

MAT Free Solved Previous Papers

Download Excellent App for MAT Preparation

Free Gk Tests

Downloaded from cracku.in



Daily Free Topic Test